



HAWAII  
PERFORMING  
ARTS *Festival*

SEASON 19: JULY 1 - 23, 2023

A SEASON OF  
MAGIC



VAL UNDERWOOD, ARTISTIC DIRECTOR



THE PATH TO EXCELLENCE  
STARTS WITH A STEINWAY.

PIANO PLANET  
HAWAII'S EXCLUSIVE STEINWAY & SONS DEALERSHIP

[www.pianoplanethawaii.com](http://www.pianoplanethawaii.com)

CALL 537-3373



*HPAF is grateful for the ongoing support of our friends at Piano Planet.*

Don't miss your chance to purchase one of our highly rated acoustic or digital pianos at the end of the 2023 Summer Festival at discounted prices. All piano purchases will help to support the continued partnership between HPAF and Piano Planet.

Viewing appointments will be available throughout the Festival. For more information, please either contact Rachel Copeland, HPAF General Manager, at [rcopeland@hawaiipaf.org](mailto:rcopeland@hawaiipaf.org) or George Nellas, Piano Planet President, at [george@pianoplanethawaii.com](mailto:george@pianoplanethawaii.com) / (808) 216-8836.  
[www.pianoplanethawaii.com](http://www.pianoplanethawaii.com) | (808) 537-3373

# TABLE OF CONTENTS

LETTER FROM THE EXECUTIVE DIRECTOR | 4

ABOUT HPAF | 5

SUPPORT THE ARTS | 7

MAHALOS | 8

HAWAIIAN CULTURAL INITIATIVE | 11

EDUCATIONAL ENGAGEMENT | 11

THE HPAF LEGACY | 12

ALUMNI IN ACTION | 13

CALENDAR OF EVENTS | 16

ADMINISTRATION | 18

FACULTY ARTISTS | 24

PRODUCTION TEAM | 31

ORCHESTRA | 33

FEATURED ARTISTS | 43

ALUMNI GUEST ARTISTS | 44

ENCRANTZ VOCAL FELLOWS | 44

COLLABORATIVE PIANO & STAGE DIRECTING  
FELLOWS | 46

DEVELOPING SINGERS | 48

YOUNG SINGERS | 61



FROM THE

# EXECUTIVE DIRECTOR



Dear Friends:

Since April 2022, my senior staff and I have been working tirelessly to prepare for our 19th Summer Festival: A Season of Magic. We are thrilled to present

Mozart's *Die Zauberflöte* and Sondheim's *Into the Woods* (fresh off its revival on Broadway). While some of you may remember our 2015 performances of the same repertoire, our newly envisioned 2023 productions will reimagine these timeless classics under the vision of our award-winning team of stage directors, designers, and artistic personnel. This year, we are also delighted to welcome GRAMMY® Award-winning baritone, Daniel Belcher, and Festival favorite, Beth Dunnington, not as only key members of our faculty, but as guest artists in our production of *Into the Woods*. Danny and Beth will appear as the Narrator/Mysterious Man and Cinderella's Stepmother, respectively.

Our biggest undertaking this season is again underwritten by the State of Hawai'i and Hawaii Tourism Authority. Thanks to the support of a \$60,000 grant, we are proud to continue the development of our Hawaiian Cultural Initiative. As per the work associated with this project, we continue to offer educational enrichment activities which honor various elements of Hawaiian music, history, language, and culture. In addition, we will come together to celebrate *The Spirit of Hawai'i* at The Palace Theatre on Saturday, July 1 at 7pm. I hope you will join us as we honor the rich culture of Hawai'i in this transcendent season opener with Blayne Asing. All proceeds raised from this concert will support HPAF scholarships for local underserved students.

On the subject of supporting students, 87% of our 2023 participants received merit scholarships and financial aid in order to make their participation a reality. Our ongoing

efforts to provide greater levels of accessibility are supported by individual contributors like yourself, as well as Margareta and Staffan Encrantz, who have graciously continued to underwrite our world-renowned Encrantz Vocal Fellowship Program.

Seldom do I have an opportunity to acknowledge the work of my tremendous team, so I would like to take a moment to celebrate co-founder and artistic director, Val Underwood, and treasurer, Irma Singer, for their 20 years of service to HPAF. In addition, I celebrate Rachel Copeland and Shayna Leahy, in honor of their five years of work as general manager and artistic administrator, respectively. It takes a village to do what we do and HPAF would not be possible without the expertise and commitment of our remarkable senior staff. I am immensely grateful to them all.

As we look ahead to 2024, we have already begun preparations for HPAF's 20th Anniversary: A Season of Celebration. Please keep an eye out for the official announcement later this summer. In the meantime, please feel free to stop me and say hello whether before a performance, at the farmer's market, or outside Waimea Coffee Company (where you'll find me most mornings). Since I first joined the HPAF Ohana as a participant in 2009, I have seen this organization continue to grow in ways unimaginable. After 19 seasons, we are still thriving because of each of you. Mahalo for your trust, support, and enthusiastic applause as we look towards a truly magical season ahead.

With aloha,

A handwritten signature in black ink that reads "Justin John Moniz".

Dr. Justin John Moniz, Executive Director

# ABOUT HAWAI'I PERFORMING ARTS FESTIVAL



**N**ow in its 19th season, Hawai'i Performing Arts Festival brings some of the most talented young musicians from Hawaii, the U.S., Canada, Australia, Asia, Africa, the Middle East, South America, and Europe to Hawai'i Island each summer for intensive study and performance training, affording young artists the opportunity to perform with professional musicians under the guidance of some of the world's most established teachers and mentors. The results are astonishing.

During the 2022 Summer Festival, nearly 20 concerts and staged performances were presented, giving the students invaluable experience and privilege of appearing on stage with some of the top musical artists in their field. All performances

were produced at various venues around the Big Island. In 2021, HPAF featured four live concerts as part of the Summer Festival, The Journey Back. The 2020 Virtual Festival featured 14 free concerts, masterclasses, and special events, featuring a world-class roster of artists, available to audiences both locally and internationally.

Throughout the year, HPAF occasionally offers special performances to help support scholarships for aspiring young artists to attend the festival each summer. Previous high season performances have included Jake Shimabukuro, Ofra Harnoy, Stanford University's Fleet Street Singers, Liane Carroll, Ignace Jang, and An Evening at the Stork Club — an HPAF original production.

## MISSION STATEMENT

HPAF is a non-profit organization whose mission is to promote the appreciation and advancement of classical music and musical theater, to offer a world-class music training and performance program in the inspirational setting of Hawaii, and to improve the education and elevate the spirit of all who participate, especially the local community.



# Your source for the *arts*

Sign up to get personalized recommendations for performing arts experiences happening near you or when you travel!



[www.redcurtainaddict.com](http://www.redcurtainaddict.com)



# SUPPORT THE ARTS

**H**awai'i Performing Arts Festival has recently revamped its giving programs so that donors can not only feel part of a dedicated family of supporters but can come closer to the world-class music they help to create!

**We invite you to join  
our loyal Ohana of  
HPAF supporters today.**

Give the gift of music and  
**FIND YOUR ALOHA**  
with us this season in paradise.

**MAKE A GIFT**

# MAHALO

HPAF would not be possible without the continued support, loyalty, and enthusiasm of so many contributors, sponsors, partners, and volunteers. This season, we are especially grateful for the overwhelming support of our beloved Ohana.

## PLATINUM SEASON SPONSOR (\$30,000 AND UP)

**State of Hawai'i — Hawaii Tourism Authority**  
**Margareta & Staffan Encrantz**



## GOLD SEASON SPONSOR (\$20,000-\$29,999)

**The Anderson-Beck Fund**  
**Deviants from the Norm**  
**The Lematta Foundation**



## SILVER SEASON SPONSOR (\$10,000-\$19,999)

**Carol & Clive Davies**  
**Laura Benz**



## BRONZE SEASON SPONSOR (\$5,000-\$9,999)

**Peggy Kent — Big Island Specialist-RE/MAX Honolulu**  
**Betty & Jim Monk**





# MAHALO

## **HPAF MEMBER (\$1,500-\$4,999)**

Carl & Marilyn Bernhardt  
Paul & Charlene Dahlquist  
Lynn Schneider & Dick Fusch  
Deb Sims  
Michael Thompson

## **HPAF SUPPORTER (\$100-\$1,499)**

Marianne Falkner  
Genette Freeman  
Sara Geber  
Justin John Moniz  
Rachel & Scott Skiba  
Val Underwood  
Lisa Wells

*All gifts received prior to June 16 in support of our 2023 Festival have been acknowledged above.  
Gifts received following this date will be recognized via the HPAF website.*

## **PRODUCING PARTNERS**

Kahilu Theatre Foundation  
The Palace Theatre  
Blue Dragon Tavern & Cosmic  
Musiquarium  
Piano Planet

## **MEDIA PARTNERS**

Red Curtain Addict  
Hawaii Public Radio  
West Hawaii Today  
Hawaii-Tribune Herald

## **PAN PIPES**

Kyle Pfortmiller  
Craig Verm

## **HOUSING DONORS**

365Hawaii Group/Keller Williams  
Realty Big Island  
Hermine Baker & Niel Thomas  
Kelly & Greg Barrick  
Kate Bell & Tom Blackburn  
Laura Benz  
Carl & Marilyn Bernhardt  
Balbi Brooks  
Jeanie Cluff  
Andy Czajkowski  
Paul & Charlene Dahlquist  
Duncan Dempster  
Olivia Ebrahimi  
Peter & Lois Gregg

Loring Howell  
Everett Knowles  
Gemma A Ley, LMT & West Hawaii  
Acupuncture  
Brigitte Anna Pajek and family  
Dave & Sherry Pettus  
David & Carolyn Rice  
Robyn's Hawaii Rentals  
John & Alexis Russell  
Nancy Stephenson  
Tina Stuart  
Michael Thompson  
Val Underwood  
Bailey Wharton

## **VOLUNTEERS**

Genette Freeman, Co-Founder &  
Executive Director Emerita  
Olivia Ebrahimi, Lead  
Georjean Adams  
Vivienne Aronowitz  
Lisa Chu-Thielbar  
Virginia Fortner  
Everett Knowles  
Kathy Kurpita  
Rona Lee  
Raymond Pajek  
Bonnie Stevenson  
Irma Singer  
Michael Thompson  
Lisa Wells

# HAWAIIAN CULTURAL INITIATIVE

This summer, HPAF is thrilled to continue its Hawaiian Cultural Initiative. Thanks to the generous support of the State of Hawai'i and Hawaii Tourism Authority, HPAF will offer a series of classes aimed to strengthen faculty, staff, and students' engagement and understanding of the rich culture of Hawai'i. Led by local faculty members, this summer's curriculum will include kukui and Lāi'i lei making, the history of Hawai'i, Hawaiian language, and hula instruction. It is the aim of this initiative to provide a greater sense of community and appreciation for the native land and its people.

In addition, the Festival will celebrate the start of its 19th season with a tribute to the rich culture of Hawai'i during a special performance at The Palace Theatre on Saturday, July 1 at 7pm. The evening will feature the musical talents of Hawaiian singer/songwriter, Blayne Asing. All proceeds raised from this concert will support HPAF scholarships for local underserved students.

*Hawane Rios (HPAF Alumna) and headliner during The Spirit of Hawai'i (2022).*



## EDUCATIONAL ENGAGEMENT

HPAF's commitment to music education reaches far beyond the training of our participants. Our "Behind the Curtain Series" will welcome audience members before the Sunday matinee performances of *The Magic Flute* and *Into the Woods*. These pre-curtain discussions will offer an opportunity for members of the community to engage with HPAF artists on thematic material and the

process of bringing an artistic vision to the stage.

Finally, we will welcome underserved youth (and up to two parents or guardians) to the final dress rehearsals of *The Magic Flute* and *Into the Woods*. For more information or to be a part of this unique experience, please email [assistants@hawaiipaf.org](mailto:assistants@hawaiipaf.org).

# The HPAF Legacy

**F**or the past 19 years, Hawai'i Performing Arts Festival has continued to provide world-class training and performance opportunities to aspiring young artists, both from Hawai'i Island and worldwide.

Following their time at HPAF, our esteemed alumni have gone on to grace some of the world's greatest stages, most notably The Metropolitan Opera, New York City Opera, English National Opera, Royal Opera House, Florida Grand Opera, Los Angeles Opera, and have appeared in film and television, on Broadway, National Tours, and regionally.





## ALUMNI in Action

HPAF is proud to share some of the recent achievements of our many wonderful alumni. Please join us in celebrating these remarkable artists— many of whom got their start at HPAF.

### EVAN BRAVOS

(Encrantz Fellow Alumnus) recently sang the role of Hannah After in *As One* with Opera Santa Barbara and Le Dancaire in *Carmen* with Chicago Opera Theatre alongside Stephanie Blythe and Jamie Barton. Evan is currently pursuing a D.M.A. in Vocal Performance at Northwestern University. HPAF audiences may remember Evan for his portrayals of Hannah After in *As One* (2022) or the title role in *Don Giovanni* (2017).



## SARA LAW

(Developing Singer Alumna) is currently a 2023 Resident Young Artist in the Ohio Light Opera's 44th Annual Repertory Season, debuting as Guenevere in *Camelot*, Josephine in *H.M.S. Pinafore*, and Cupid in *Orpheus in the Underworld*. HPAF audiences may most recently remember Sara for her portrayals of April in *Company* in 2019 and Johanna in *Sweeney Todd* in 2018.



## ALYSIA LEE

(Professional Fellow Alumna) is the inaugural President of the Baltimore Children & Youth Fund, the bold hyperlocal grantmaker stewarding public funds to support the success of Baltimore's young people. BCYF is committed to authentic community engagement, and all strategy and grant decisions are shaped and led by Baltimore community members and youth leaders. HPAF audiences may remember Alysia from the 2011 season where she appeared in numerous concerts across the Big Island including *Wine, Women, and Song*.



## CECILIA VIOLETTA LOPEZ

(Developing Singer Alumna) was recently named one of "Idaho's Top 10 Most Influential Women of the Century" by *USA Today* and has been named one of opera's "25 Rising Stars" by *Opera News*. She made her Houston Grand Opera debut as Violetta in Verdi's *La traviata* in 2022. HPAF audiences may remember Cecilia for her portrayal of the title role in Monteverdi's *L'Incoronazione di Poppea* in 2011 or for gorgeous solo recital during the 2020 Virtual Festival.



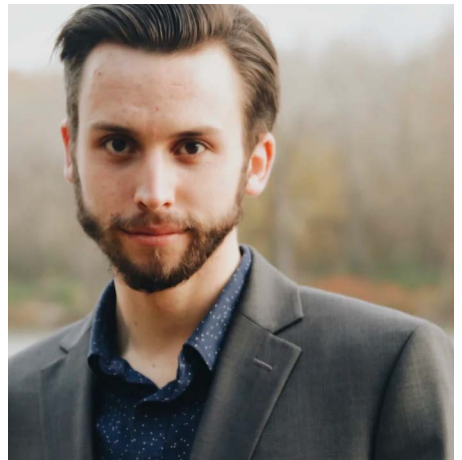
## BRENNAN MARTINEZ

(Encrantz Fellow Alumna) recently joined Chicago Fringe Opera for the World Premiere of *La Jetée*. Chicago Classical Review said, “She wrapped her well-schooled and sensitive mezzo-soprano around the character’s singable vocal lines with similarly spot-on expressive purpose.” She then returned to Cedar Rapids Opera as a young artist to cover Dorabella in *Così fan tutte*. Brennan also made her debut with Milwaukee Opera Theatre as the Third Wood Sprite in *Rusalka*. HPAF audiences may remember Brennan for her portrayal of the title role in *The Tragedy of Carmen* in 2019.



## JACK MURPHY

(Developing Singer Alumnus) is currently a Resident Professional Artist with Ohio Light Opera, performing the roles of Roy Dexter in Emmerich Kálmán’s *Arizona Lady* and Orpheus in *Orpheus in the Underworld*. HPAF audiences may remember Jack for his portrayal of Claude in *Hair* in 2022.



## HALLIE SCHMIDT

(Young Singer & Developing Singer Alumna) recently made her Opera Theatre of St. Louis debut covering The Queen of the Night in *The Magic Flute*. Hallie was a District Winner in the 2022 Metropolitan Opera Laffont Competition, and was also awarded the Grace Keagy in the 2022 Lotte Lenya Competition. HPAF audiences may most recently remember Hallie from her performance of Tytania in *A Midsummer Night’s Dream* in 2019 and for her first-prize winning performance during the 2020 HPAF Vocal Competition: Classical Division.



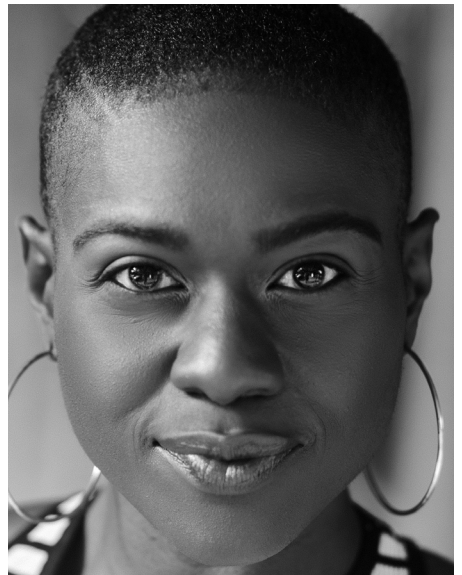
## JOHN TIBBETTS

(Encrantz Fellow Alumnus) recently sang as the baritone soloist in *Carmina Burana*, Second Priest in *The Magic Flute*, Doncairo in *Carmen*, and Reuben in *Joseph and the Amazing Technicolor Dreamcoat* with Utah Festival Opera. He also made his debut in the role of Ping in Puccini's *Turandot* in May 2022 with Opera Grand Rapids. HPAF audiences may remember John for his portrayals of Harry in *Company* and Escamillo in *The Tragedy of Carmen* in 2019.



## NYLA WATSON

(Encrantz Fellow Alumna) is currently a Fate on the National Tour of *Hadestown*. She also recently appeared in *Waitress* on Broadway alongside Sara Bareilles. Nyla was awarded First Place in the 2023 Lotte Lenya Competition. HPAF audiences may most recently remember Nyla for her performance of *Rise Up!* in 2021 and for her first-prize winning performance during the 2020 HPAF Vocal Competition: Musical Theatre Division.



# CALENDAR OF EVENTS

## FESTIVAL OPENER: THE SPIRIT OF HAWAI'I

SATURDAY, JULY 1 • 7:00 PM  
PALACE THEATRE

HPAF celebrates the rich culture of Hawai'i in this transcendent season opener, featuring an evening of musical storytelling with Blayne Asing. All proceeds will support the HPAF Scholarship Fund for local high school students. Sponsored by the State of Hawai'i and Hawai'i Tourism Authority.  
**\$45 — Priority Orchestra Seating,**  
**\$30 — General Admission**

## CHANGING KEYS WITH PHIL KADET: THE MAGIC OF TRANSFORMATION

WEDNESDAY, JULY 5 • 7:00 PM  
BLUE DRAGON

Join Festival-favorite, NYC pianist Phil Kadet in an evening under the stars at the iconic Blue Dragon. The evening will take audiences on a journey of transformation and transcendence. Sponsored by Blue Dragon Tavern & Cosmic Musicquarium & The Kent-Meschke Ohana.

**\$65 — General Admission**

## VERZAUBERUNG (ENCHANTED EVENING)

FRIDAY, JULY 7 • 7:00 PM  
DAVIES CHAPEL

VERZAUBERUNG [noun: Enchantment]  
An enchanting evening of German Lieder featuring fairytales, fantasy, and legends featuring the cast of The Magic Flute.

**\$30 — General Admission**

## VOCAL FACULTY RECITAL

SATURDAY, JULY 8 • 2:00 PM  
DAVIES CHAPEL

An intimate hour of vocal music featuring the HPAF Vocal Faculty. Non-perishable food items will be collected in support of Waimea Food Pantry at St. James Parish.

**Suggested Donation — Non-Perishable Food**

## GREAT PERFORMANCES

SATURDAY, JULY 8 • 7:00 PM  
DAVIES CHAPEL

A captivating evening of intimate chamber music featuring HPAF Faculty and Guests Artists.

**\$30 — General Admission**

## SPELLBOUND

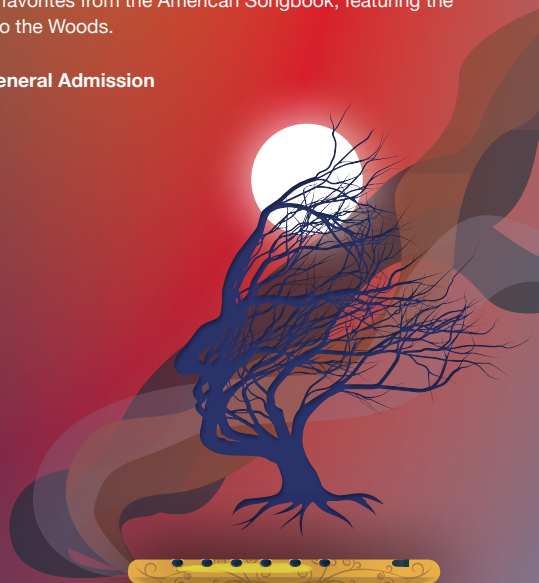
FRIDAY, JULY 14 • 7:00 PM  
DAVIES CHAPEL

"That Old Black Magic," "Witchcraft," "You Put a Spell on Me" and other favorites from the American Songbook, featuring the cast of Into the Woods.

**\$30 — General Admission**

The 2023 Summer Festival is generously sponsored by The State of Hawai'i & Hawai'i Tourism Authority (Platinum Sponsor), Margareta & Staffan Encrantz (Platinum Sponsor), The Anderson-Beck Fund (Gold Sponsor), Deviants from the Norm (Gold Sponsor), The Lematta Foundation (Gold Sponsor), Carol & Clive Davies (Silver Sponsor), Laura Benz (Silver Sponsor), Peggy Kent — Big Island Specialist-RE/MAX Honolulu (Bronze Sponsor), Betty & Jim Monk (Bronze Sponsor), and many others.

Hawai'i Performing Arts Festival is a 501(c)3 nonprofit organization; all donations are tax exempt.





## DIE ZAUBERFLÖTE (THE MAGIC FLUTE)

SATURDAY, JULY 15 • 7:00 PM  
KAHILU THEATRE

Mozart's timeless opera follows the adventures of Prince Tamino and Papageno on their search for the Queen of the Night's daughter, Pamina. To guide their adventures, the duo are gifted a magic flute (Die Zauberflöte). Sung in German with English dialogue and supertitles. Sponsored by Michael Thompson and Carl & Marilyn Bernhardt.

\$25, \$35, \$45 — Reserved Seating

## BEHIND THE CURTAIN

SUNDAY, JULY 16 • 3:00 PM  
SIMPERSMAN GALLERY AT KAHILU THEATRE

Join the artistic team of The Magic Flute in an insightful and intimate preshow discussion surrounding the process of mounting this timeless classic

Free — General Admission

## DIE ZAUBERFLÖTE (THE MAGIC FLUTE)

SUNDAY, JULY 16 • 4:00 PM  
KAHILU THEATRE

Mozart's timeless opera follows the adventures of Prince Tamino and Papageno on their search for the Queen of the Night's daughter, Pamina. To guide their adventures, the duo are gifted a magic flute (Die Zauberflöte). Sung in German with English dialogue and supertitles. Sponsored by Michael Thompson and Carl & Marilyn Bernhardt.

\$25, \$35, \$45 — Reserved Seating

## YOUNG SINGER SHOWCASE

THURSDAY, JULY 20 • 7:00 PM  
GATES PERFORMING ARTS CENTER AT HPA

A fully-staged performance featuring HPAF's Young Singer Program participants from Hawai'i Island and beyond. Sponsored by Carol & Clive Davies.

\$30 — General Admission

## INTO THE WOODS

SATURDAY, JULY 22 • 7:00 PM  
KAHILU THEATRE

Sondheim's Tony Award-winning musical takes us on a magical journey in search of the cow as white as milk, the cape as red as blood, the hair as yellow as corn, the slipper as pure as gold!

\$25, \$35, \$45 — Reserved Seating

## BEHIND THE CURTAIN

SUNDAY, JULY 23 • 3:00 PM  
SIMPERSMAN GALLERY AT KAHILU THEATRE

Join the artistic team of Into The Woods in an insightful and intimate preshow discussion surrounding the process of mounting one of Sondheim's most popular works.

Free — General Admission

## INTO THE WOODS

SUNDAY, JULY 23 • 4:00 PM  
KAHILU THEATRE

Sondheim's Tony Award-winning musical takes us on a magical journey in search of the cow as white as milk, the cape as red as blood, the hair as yellow as corn, the slipper as pure as gold!

\$25, \$35, \$45 — Reserved Seating

**TICKETS AND MORE INFO AT**

**[HawaiiPerformingArtsFestival.org](https://HawaiiPerformingArtsFestival.org)**



*Find Your Aloha*

# ADMINISTRATION



**JUSTIN JOHN MONIZ\*** — Executive Director | Music Director/Conductor, *Into the Woods* | Co-Chair, The Encrantz Vocal Fellowship Program

A recipient of the Yamaha Corporation Top 40 Music Educator Award and a Musical America Top Professional of the Year, Dr. Justin John Moniz serves as Associate Director of Vocal Performance and Coordinator of Vocal Pedagogy at New York University's (NYU) Steinhardt School where he holds the rank of Associate Professor. At NYU, Moniz leads the graduate vocal pedagogy program, teaches courses in pedagogic theory, practice, applied voice, and directs the DownBeat Award-winning NYU Pop/Rock Ensemble, a group he founded in 2019. He also serves as Program Director of the Contemporary Vocal Summer Workshop. In addition to his appointment at NYU, Dr. Moniz is a member of the Vocal Arts Faculty at Manhattan School of Music where he teaches Vocal Wellness & Physiology. He previously served as Chair of Vocal Studies at Millikin University and Visiting Instructor of Opera at the Oberlin Conservatory of Music. Since August 2017, Moniz has served as Executive Director of HPAF. His innovative programming has earned HPAF both global recognition and multiple awards from the National Opera Association, The American Prize, and BroadwayWorld. Throughout Moniz's administrative tenure, he has won the organization over a million dollars in public and private grants, increased the annual operating budget by nearly 40%, and yielded the highest student enrollment in the festival's 19-year history. Prior to his work as Executive Director, Moniz served as Associate Executive Director, Assistant Artistic Director, and Vocal Faculty Chair. A three-time winner of The American Prize in Vocal Performance, Moniz has sung over 90 roles with companies including Opera Grand Rapids, Utah Festival Opera & Musical Theatre, Sarasota Opera, Florida Grand Opera, The Columbus Philharmonic, DreamCatcher Theatre, and more. His debut solo album, *Along the Way* (2021), is available on all streaming platforms. Dr. Moniz holds four degrees from Florida State University, the University of Miami, and SUNY Potsdam, and certifications from Harvard Business School, Duke University, and the National Academy of Sports Medicine (NASM). He has received young alumni awards from all three of his alma maters and was previously named one of Florida State University's Notable Noles, University of Miami's 30 Under 30, and a SUNY Potsdam Rising Star. As a voice teacher, researcher, and NASM Certified Personal Trainer, Moniz's current research focuses on identifying the parallels between the worlds of voice science and sports medicine, more specifically concerning vocal load, efficiency, and sustainability. For more information: [justinjohnmoniz.com](http://justinjohnmoniz.com) / [@jj\\_moniz](https://www.instagram.com/justin_moniz)

\* denotes HPAF Alumni

# ADMINISTRATION



**VAL UNDERWOOD** — Artistic Director | Co-Chair, The Encrantz Vocal Fellowship Program | Vocal Faculty

Val Underwood is Artistic Director of Hawai'i Performing Arts Festival. He is distinctive for his equal skill as a pianist (the LA Times described his playing as “exquisite”) and as a voice teacher. He has trained a number of successful concert pianists, as well as singers who appear with companies world-wide. As a pianist he has performed in concert with principle players of the New York and Los Angeles Philharmonics and with artists such as Mitchell Lurie, Eudice Shapiro, Glenn Dicterow, Ofra Harnoy, Gary Gray, Jeannine Altmeyer, Jennifer McGregor, Ricky Ian Gordon and many others. His film and television performances include the Masterpiece production of Willa Cather’s *The Song of the Lark*. After directing programs in The Strawberry Creek Festival and The Adriatic Chamber Music Festival, he co-founded Hawai'i Performing Arts Festival in 2004 with his close friend, Genette Freeman. Hawai'i Performing Arts Festival has hosted hundreds of students from all over the world and an acclaimed faculty of performers and teachers. His teaching career has taken him regularly to Los Angeles, New York and London. He guest lectures and conducts master classes at schools throughout the country. He counts among his own most influential teachers Rita Hutcherson, Reginald Stewart, Dora Zaslavsky, and Arminda Canteros (student of Vincenzo Scaramuzza) in piano and Ernest St. John (Jack) Metz and Martial Singher in voice. Early in his career, he had opportunities to accompany in the studios of some of the great singers/teachers of the century – Lotte Lehmann, George London, Rose Bampton and Martial Singher. He is honored that a number of his colleagues and former students have been esteemed faculty members of Hawai'i Performing Arts Festival.

# ADMINISTRATION



**SCOTT SKIBA** — Assistant Artistic Director | Chair, Stage Directing Fellowship Program | Stage Director, *Into the Woods*

Award-winning Stage Director Scott Skiba has led 80+ new productions earning recognition for his imaginative stage direction and dynamic physical approach to storytelling that is “masterful...ingenious...first-rate...vivid and emotionally charged” with companies including Indianapolis Opera, Mobile Opera, Opera Grand Rapids, Pensacola Opera, Opera Tampa, and Toledo Opera. Scott serves as Executive Artistic Director, Cleveland Opera Theater; Production Director, Opera Western Reserve; and Acting and Movement Instructor, Music Across the Pond. Scott is a pioneer in producing interdisciplinary collaborations in alternative and site-specific venues, and a proponent of new opera. Scott launched {NOW} Fest, Cleveland Opera Theater's annual festival to create, develop, and produce new opera, serves on the Chamber Opera Composition Committee for the National Opera Association (NOA), and collaborates to develop and premiere 18 new operas and counting. An advocate of arts education, Scott serves as Director of Opera Studies for Baldwin Wallace Conservatory, where under his direction the program has been the recipient of The American Prize for Opera Performance, and The Charles Nelson Reilly Prize in Stage Direction, and 1st Place in the NOA Collegiate Opera Production Competition. Additional university directing credits include University of Tennessee Opera Theater, University of Texas at Rio Grand Valley, Oberlin Opera Theater, Martina Arroyo's Role Preparation Program at the Indiana University Jacobs School of Music, and Interlochen Opera Theater. Previous appointments include Executive Director of the Oberlin in Italy opera training program, Instructor of Voice and Opera Theater, Interlochen Arts Academy; and Associate Instructor of Voice, Indiana University Jacobs School of Music. Scott devised and directed multiple projects to continue artistic collaboration throughout the pandemic including *Opera ON DEMAND* for the Curtis Institute of Music, *A Taste of Traviata*, a cinematic adaptation of *La Traviata* and *Romeo + Juliet*, a reimagined telling of Shakespeare's play and Gounod's opera for Opera Western Reserve; and *Operas in Place*, nine new short operas by World-renowned composers and librettists in collaboration with Baldwin Wallace Conservatory, Cleveland Opera Theater, and On Site Opera in NYC. Scott is represented by Marvel Arts Management. More info: [www.ScottSkiba.com](http://www.ScottSkiba.com)

# ADMINISTRATION



## **RACHEL E. COPELAND** — General Manager | Chair, Vocal Faculty

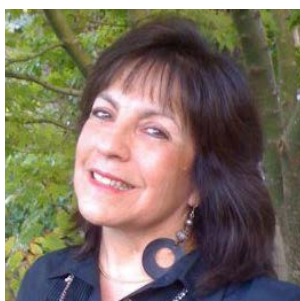
Rachel E. Copeland continues to receive acclaim as a “revelation with her coloratura soprano leaping easily to impossible heights!” She is a sought after artist combining her crystalline voice with her compelling and energetic stage presence. Ms. Copeland recently debuted at Avery Fisher Hall as the soprano soloist in Mozart’s Coronation Mass to rave reviews as well as performances with the Brussels Chamber Orchestra in a concert of arias and duets. Other career highlights include the Contessa in Mozart’s *Le Nozze di Figaro* with Cleveland Opera Theater, Frasquita in Bizet’s *Carmen* with San Diego Opera, Micaela in Peter Brook’s *Le tragédie de Carmen* with Indianapolis Opera, and Woglinde in Wagner’s *Das Rheingold* and first nymph in Dvorak’s *Rusalka* with North Carolina Opera. She returned to Apollo’s Fire, the Cleveland Baroque Orchestra in 2013 to great acclaim as the Queen of the Night in Mozart’s *The Magic Flute*, including a national broadcast and her debut at Severance Hall, the prestigious home to the Cleveland Symphony Orchestra. Other considerable performances include Ms. Copeland’s appearances as Zdenka in Strauss’s *Arabella*, Musetta and Mimì in *La bohème*, Lauretta in Puccini’s beloved *Gianni Schicchi*, Lucia in Donizetti’s *Lucia di Lammermoor*, Juliette in Gounod’s *Roméo et Juliette*, Adele in J. Strauss’ *Die Fledermaus*, Mabel in *The Pirates of Penzance*, and Papagena in *The Magic Flute*. Internationally, Ms. Copeland has performed the roles of Donna Elvira in Mozart’s *Don Giovanni* and Adina in Donizetti’s *L’elisir d’amore*. Recent engagements included a world premiere workshop with Cleveland Opera Theatre, a world premiere with Penn State Opera Theater, and a role and company debut of Agueda in Mayo, *Bisperas ng Liwanag in the Philippines* (cancelled due to COVID). In addition to the operatic stage, Ms. Copeland has been praised for her “elegant and smooth tone” in oratorio and symphonic works. As a frequent performer with the Helena Symphony (MT), Ms. Copeland has most recently sung the role of Eve in Hadyn’s *The Creation* and as the soprano soloist for Bach’s *Mass in B minor* as well as the *St. Matthew Passion*. Other notable engagements were with Apollo’s Fire for Handel’s *Messiah*, The Choral Society of Durham (NC) as the soprano soloist in Barber’s *Prayers of Kierkegaard*, and the soprano soloist in Hadyn’s “Lord Nelson’s Mass” and “Missa belle tempori.” Dr. Copeland began an appointment at Penn State School of Music as a member of the Voice Department in Fall, 2018, and now also serves as the Associate Director, Director of Graduate Programs. She previously was on the faculty of East Carolina University School of Music where she served as the Associate Director (2016 – 2018), the Coordinator of Graduate Studies (2014 – 2018), and a member of the Voice Faculty (2011 – 2018). In both academic years 2017 – 18 and 2014 -2015, Dr. Copleand was nominated for the Robert Wright Alumni Excellence in Teaching Award at East Carolina University. Many of Dr. Copeland’s students have received awards, scholarships, assistantships, and are featured in principle roles at the undergraduate and graduate level at prestigious music schools like Boston Conservatory, Indiana University, Florida State University, Oberlin Conservatory of Music, and the University of North Texas, in addition to sharing the stage with luminaries of the field like Natalie Dessay to Vanessa Williams. Dr. Copeland is frequently sought after as a master class technician both nationally and abroad and has been on the faculty of the *Cornish American Song Institute* in Falmouth, England since 2016 and *Cantos para hermanar al mundo* in Torréon, Mexico in 2019. During the summers of 2011 and 2012, Dr. Copeland was a faculty member of *Musica nelle Marche* in Urbania, Italy. Administratively, Dr. Copeland serves at General Manager for the *Hawai’i Performing Arts Festival* and has previously served in the positions of Program Director (2017) as well as the Operations Manager (2011 – 2016) for *Oberlin in Italy* in Arezzo, Italy. Dr. Copeland holds the Doctor of Music degree in Vocal Performance with a minor in Music History from Indiana University; the Master of Music degree in Voice Performance from Baylor University; and the Bachelor of Music Education degree in Choral Conducting from Baylor University.

# ADMINISTRATION



## **SHAYNA LEAHY** – Artistic Administrator

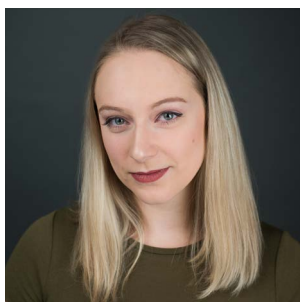
Shayna Leahy currently serves as the Artistic Administrator for HPAF after spending two summers as the Director of Production. She most recently was the stage director for Wichita Grand Opera's 2019 production of *Carmen*, having previously directed productions of *Madama Butterfly*, *Turandot*, *Otello*, *Il Trovatore*, and *Aida* for them. She made her directing debut with New York City Opera in September 2018, with a production of *Il Barbiere di Siviglia* in Bryant Park. Her productions are hailed as being “deeply felt, and deeply moving” with emphasis on “fine acting as well as strong singing” (Wichita Eagle). She has also served as Assistant Director of Martina Arroyo's Prelude to Performance Program in New York, was faculty for the Opera Academy of the Midwest, and is currently the Director of Vocal Studies at Highland Community College, where she has led a nationally-recognized opera education initiative in collaboration with Wichita Grand Opera. Her productions at HCC have been Region V finalists in KCACTF, and she received the Region V KCACTF Outstanding Music Director award for her work on *Rent*. In addition, she has coached and music directed multiple students who have received national KCACTF awards for Distinguished Performance in a Musical.



## **IRMA SINGER** – Director of Finance

Irma Singer is a native of California, originally hailing from Culver City in Los Angeles County, where she began her career as a bookkeeper working for an independent jewelry manufacturer. In 1985, Irma relocated to Santa Barbara, CA, where she continued her bookkeeping occupation working for a developer of AI programming languages. Irma progressed into providing personalized bookkeeping for private individuals, as well as maintaining a full-time position as Accounting Manager at a Four Diamond hotel in Santa Barbara, where she has been employed for the last 29 years. Irma joined the Board of Directors of Hawai'i Performing Arts Festival as a Treasurer. She continues to provide support to HPAF as it begins its 19th season.

# ADMINISTRATION



## **CIARA NEWMAN** — Assistant General Manager

Ciara Emily Newman is a soprano and an Alaska native. Currently living in Cleveland, Ohio Ciara is kept busy teaching a private studio while cultivating a career as a professional performer. During the spring of 2021 Ciara earned her Master's degree in vocal performance and pedagogy at the Pennsylvania State University. During the COVID-19 pandemic, Ciara has continued to perform, exploring the many ways opera can live outside of the theater. Recently, she performed a live radio broadcast of Menotti's *The Old Maid and the Thief* with Penn State Opera Theater. Ciara was seen in the concert premier of Griffin Candey's *The House of Bernarda Alba* as Magdalena in January of 2020. She has also performed in the Midwest premier of Tom Cipullo's *Glory Denied* as Older Alyce Thompson. Previous roles include Papagena in Opera Fairbanks' production of *The Magic Flute*, Madame Lidoine in Baldwin Wallace University's production of *Dialogues of the Carmelites*, and Elisetta in Cimerosa's *Il Matrimonio Segreto*. While dedicating her life to a career on the operatic stage Ciara also has a passion for musical theatre, she has performed in regional productions of *RENT*, *The Wizard of Oz*, and *Les Misérables*.



## **MAEVE HOGAN** — Artistic Administration Intern

Maeve Hogan is excited to join HPAF for the first time this summer! She just graduated from Oberlin College, where she ran the Central Ticketing Service (and studied Directing and Arts Administration in her free time). Her favorite stage directing credits include *Chicago*, *A Midsummer Night's Dream*, and a new contemporary opera, *The Puppy Episode*, for which she served as assistant director.



## **NOLAN SANCHEZ** — Artistic Administration Intern

Nolan Sanchez is an avid proponent of live arts and entertainment. Based in Southern California, he's currently employed by the Walt Disney Company as an Entertainment and Guest Talent Coordinator at the Disneyland Resort and contributes to live-show operations at Cedar Fair's Knotts Berry Farm. As an actor, he's performed with the Oregon Shakespeare Festival, Island Shakespeare Festival, Ferndale Repertory Theater, and Next Stage Repertory Theatre. Collaborating with emerging playwrights on new shows is one of the true highlights of Nolan's career thus far. This passion has been realized during five seasons at the annual Ashland New Plays Festival and four productions at the Oregon Fringe Festival, both located in Ashland, Oregon. Nolan earned a Bachelor of Fine Arts in Theatre with a Minor in Music from Southern Oregon University. He is currently pursuing a Master's in Communication concentrating on New Media and Digital Marketing at Southern New Hampshire University. Nolan is excited and thankful to work with the Hawai'i Performing Arts Festival this summer!

# FACULTY ARTISTS



**DANIEL BELCHER** — Vocal Faculty | Narrator,  
**Mysterious Man, *Into the Woods***

GRAMMY® Award-winning baritone Daniel Belcher has performed in many of the music capitals of the world, including Paris, London, New York, San Francisco, Berlin, Stuttgart, Amsterdam, Geneva, Madrid, Toronto, Montreal, Tokyo, Seoul, and Houston. With a repertoire of more than 90 roles, Belcher has championed roles from the Baroque to those composed expressly for him. World premieres include

Angels in America by Peter Eötvös, *Little Women* by Mark Adamo, *Elizabeth Cree* by Kevin Puts and Mark Campbell, *The Scarlet Letter* by Lori Laitman and David Mason, and *The House without a Christmas Tree* by Ricky Ian Gordon and Royce Vavrek, among others. Belcher won the GRAMMY® Award for singing Jaufré Rudel in Kaija Saariaho's *L'Amour de Loin*. In the 2022-23 season, he sang the roles of Lawrence in *The Wreckers* by Dame Ethel Smyth at Houston Grand Opera and Fritz/Frank in *Die Tote Stadt* at Opera Colorado, as well as Macbeth in a world-premiere reading of *Working for the Macbeths*, with American Lyric Theatre. As a teacher, Belcher has served as the Director of the Artist Diploma at William Jewell College in Liberty, MO. He also serves as the voice teacher of the Resident Artist Programs at both Opera Colorado and the Lyric Opera of Kansas City. Previously, he has taught at The Florida State University, IVAI – Tel Aviv, The Sibelius Academy in Helsinki (Creative Dialogue), CoOperative at Rider University and the Hawai'i Performing Arts Festival, where he will teach summer 2023.



**KATHLEEN BELCHER** — Stage Director,  
***The Magic Flute***

Stage director Kathleen Smith Belcher is currently engaged in her 22nd year as a member of the directing staff at the Metropolitan Opera. Among others, she has worked extensively with the San Francisco Opera, Lyric Opera of Chicago, Houston Grand Opera, Los Angeles Opera and the San Diego Opera. Belcher has directed at La Scala (Milan, Italy) Teatro Real (Madrid, Spain), The Spoleto Festival (Italy)

and has assisted at ENO and the Royal Opera House. Engagements for the 2022-23 season included directing *Le Comte Ory* for the Lyric Opera of Chicago and directing *Rigoletto* for Pacific Symphony. Belcher co-wrote, produced, and directed an original piece entitled *Baseball, A Musical Love Letter* which was premiered by the Lyric Opera of Kansas City in May of 2021 and will be produced again in May of 2023 by Opera Orlando. Upcoming engagements include directing a new production of *The Flying Dutchman* for Opera Colorado. Belcher recently joined the faculty of the University of Houston as Artistic Director of the Moores Opera Center. Belcher has also taught at the University of Michigan, William Jewell College, Florida State University, The University of Kansas, and CoOperative at Rider University.



# FACULTY ARTISTS



## **WILLIAM NIELD CHRISTENSEN** — Vocal Faculty

Dr. Christensen has taught at Oklahoma City University since 2004. His students have sung on the stages of Bayerische Staatsoper Munich, Deutsche Oper Berlin, Bayerische Staatsoper Berlin, Oper Leipzig, Opernhaus Zürich, Opéra National de Montpellier, The Metropolitan Opera, Lyric Opera of Chicago, The Santa Fe Opera, San Francisco Opera, Opera Theater of Saint Louis, Glimmerglass Opera Festival, Lyric Opera Kansas City, San Diego Opera, Sarasota Opera, Palm Beach Opera, and Des Moines Opera. Dr. Christensen's musical theater students have been seen on the stages of Lincoln Center, Majestic Theater NYC, New Amsterdam Theater NYC, Imperial Theater NYC, American Airlines Theater NYC, Barrow Street Theater NYC, New York Musical Festival, Music Theater Wichita, La Jolla Playhouse, Paper Mill Playhouse, Casa Mañana, Fireside Theater, and Pittsburgh CLO. Dr. Christensen's students have been accepted into many of the world's top graduate vocal programs, including: the Royal College of Music in London, Yale University, the Manhattan School of Music, The Juilliard School, Indiana University, Cincinnati Conservatory of Music, University of Michigan, the San Francisco Conservatory of Music, Northwestern University, the Boston Conservatory of Music, the Peabody Conservatory, and the Wanda L. Bass School of Music at Oklahoma City University.



## **BETH DUNNINGTON** — Acting Faculty | Cinderella's Stepmother, *Into the Woods*

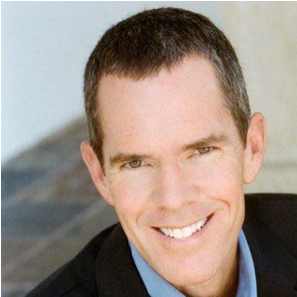
Beth Dunnington moved from NYC to Waimea in 2007. She's a stage director, performer, and acting / musical theatre teacher who most recently directed the opera *As One* for HPAF (2022 season), and the opening performance of their 2021 season: the concert *Stars of Tomorrow*, featuring the HPAF "Young Singers." She's currently directing *Rent* at the Kahilu Theatre (June 2023). Other HPAF productions she directed: *The Last Five Years*, *Big Island Broadway*, and *Company*, starring Justin John Moniz. For six years, she was the director of HPAF's Preteen Singer program. Beth is the director of the Kahilu Youth Troupe, the training program in acting and musical theatre at the Kahilu, now in its twelfth year. After playing the role of The Witch in HPAF's 2015 production of *Into The Woods*, she's looking forward to again performing in this Sondheim musical, this time as Cinderella's Stepmother. Beth is married to developer Steve Dunnington. Their children, Marena and Sean, are proud HPAF alumni. Beth is thrilled to return to HPAF for her twelfth season as a faculty member. She is a long-time member of AEA and SAG/AFTRA, and leads the Big Island Writers' Workshop and the "Performing The Story" zoom monologue series.

# FACULTY ARTISTS



## **CARL DUPONT** — Vocal Faculty

Carl DuPont is an artist, innovator, and educator dedicated to *Transformational Inclusion* and *Care of the Professional Voice*. His “rich, nuanced baritone” (Columbus Underground) has held center stage in performances at the New York City Opera, Glimmerglass Festival, Opera Carolina, Opera Columbus, First Coast Opera, Toledo Opera, Opera Saratoga, Sarasota Opera, Cedar Rapids Opera, El Palacio de Bellas Artes, Opera Company of Brooklyn, The IN Series, Carnegie Hall, the Kennedy Center, and Leipzig Opera. Recent roles include Hawkins Fuller in *Fellow Travelers*, Don Basilio in *The Barber of Seville*, and Leporello in *Don Giovanni*. His articles can be found in *The Laryngoscope* and the *Voice and Speech Review*. DuPont can be heard on the world premiere recordings of the *Caldara Mass in A Major*, *The Death of Webern*, and his solo album, *The Reaction*. A graduate of the Eastman School of Music (BM), Indiana University (MM), and the University of Miami (DMA), he currently serves on the faculties of the Johns Hopkins University’s Peabody Institute and the Executive Education division of the Carey School of Business. DuPont also teaches at the Hawai’i Performing Arts Festival and is the artistic director for the Kennedy Center’s Washington National Opera Institute.



## **PAUL FLOYD** — Chair, Collaborative Piano Professional Fellowship Program | Music Director, Conductor, *The Magic Flute*

Pianist Paul Floyd works as a collaborative artist, vocal coach and conductor. He has taught on the music faculties of Chapman University and the University of California, Los Angeles. For sixteen years he served as an Assistant Conductor with the Los Angeles Opera where he often collaborated with some of the opera world’s greatest singers and conductors, played in the opera orchestra and was regularly featured as a lecturer at pre-performance talks. During the summers he has coached singers or conducted at the Santa Fe Opera, Aspen Music Festival, Hawai’i Performing Arts Festival and the Astoria Festival in Oregon. Paul frequently appeared as the official accompanist for the Western Region Finals of the Metropolitan Opera National Council Auditions. His movie credits include an appearance with Julie Andrews and Anna Netrebko in *Princess Diaries II*, and a Disney Hall performance with Vivica Genaux in Anthony Hopkins’ *Fracture*. He is currently working as a pianist for the Portland Opera and will be the coach of their Resident Artist program in the Fall. Paul holds a doctoral degree in piano performance from the University of Colorado, Boulder, in addition to degrees from the Eastman School of Music and the University of Southern California, where he graduated summa cum laude.

# FACULTY ARTISTS



**CHAN MI JEAN** — Music Director, Young Singer Program  
| Vocal Coach

Chan Mi Jean is the Lecturer in Music at the University of Tennessee at Martin, where she specializes in Collaborative Piano. Jean is an emerging solo pianist, chamber musician, and opera coach who has made her international appearances including performances in Austria, Canada, China, Czech Republic, Italy, Thailand, and the United States. Jean has established herself as an opera coach through years of training and worked on many operas in Europe and the U.S. with world renowned conductors such as David Effron, Jane Glover, Andrew Bisantz, and Ari Pelto. She was a recipient of the Opera Coach Fellowship for Aspen Opera Center for one of the mainstage shows *La Clemenza di Tito* in summer of 2017 with the invitation for the same position for *Trouble in Tahiti* in 2018. Prior to joining UT Martin, Jean has served as the Apprentice Coach for the Virginia Opera. As an active chamber musician, Jean has performed with various musicians on a wide range of repertoire. Jean was the winner of the Irving Shain Woodwind-Piano Duo Competition with Oboist Dr. Emily Knappen and has received an Honorable Mention in the American Prize Instrumental Solo Competition for her recent recording with UT Martin tuba professor Dr. Steve Darling. A native of Seoul, Korea, Jean has received her D.M.A. in Collaborative Piano from the University of Wisconsin-Madison, with a minor in Opera Coaching; M.M. and P.D. in Piano Performance from Indiana University.

# FACULTY ARTISTS

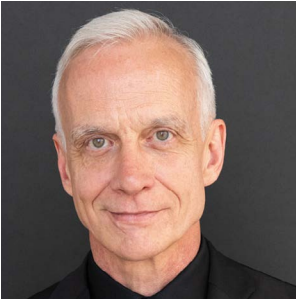


## JENNIFER MCGREGOR – Vocal Faculty

Jennifer McGregor is known as one of Australia’s most important operatic sopranos. In the words of conductor Brian Castles-Onion, “*The brilliant Australian soprano Jennifer McGregor was a fine coloratura with a perfect trill, charming and a wonderful actor. These combined to make her an audience favorite for two decades with Opera Australia.*”

After graduating from the Sydney Conservatorium Opera School, she spent three years in Musical Theater, with leading roles in *The Sound of Music*, *The Venetian Twins*, *A Funny Thing Happened on the Way to the Forum*, *Cabaret* and *Candide*. She received The National Theater Award for the “Best Newcomer” for her portrayal of Nellie Melba in the Sydney National Theater production of *A Toast to Nellie Melba*. During that time she was first prize winner of The Armstrong Martin Singing Competition. She auditioned for The Australian Opera (now known as Opera Australia) and was invited to join the company, where she remained, performing an extensive repertoire of principal roles for over 22 years. Under the mentorship of Maestro Richard Bonyngé, her first season at the Sydney Opera House included Fe-Aniche-Ton in *Bat-Ta-Clan* by Offenbach. Ophelia in the Thomas *Hamlet* opposite baritone Sherril Milnes, which skyrocketed her career, followed by Musetta in *La Bohème*, Sofie in *Der Rosenkavalier*, Xenia in *Boris Godunov*, Adele in *Die Fledermaus* (with Dame Joan Sutherland) and The Queen of the Night in *Die Zauberflöte*, a role she ultimately performed over 100 times in Australia and in Germany. The following season her list of roles expanded to include Oscar in *Un Ballo in Maschera*, Norina in *Don Pasquale*, Rosina in *Il Barbiere di Siviglia*, Yum Yum in *The Mikado*, Blöndchen in *Abduction of the Seraglio*, Marie in *La Fille du Regiment*, Massenet’s *Manon*, Morgana in *Alcina* (with Joan Sutherland), and The Woodbird in *Siegfried*. She also performed the title role in *Lucia di Lammermoor*. She was the first soprano to perform Lucia at the house following Dame Joan Sutherland, for whom the production was originally mounted, but over her career Jennifer McGregor performed the role many more times than her legendary predecessor. In fact, McGregor was claimed by critics as the “*New Sutherland*”. Continuing under the baton of Sir Richard Bonyngé and with conductors Simone Young and Charles Mackerras, subsequent seasons included the addition of Violetta in *La Traviata*, a role she performed extensively, *L’enfant et les Sortilège*, The title role in *Lulu*, in its first fully staged production in Australia and also performed in Germany, Gilda, Cleopatra, Philine, Lakmé, the four heroines in *Les Contes d’Hoffmann*, Juliette and the title role in *Die Lustige Witwe*, as well as numerous guest performances with Sydney Symphony, Melbourne Symphony, Queensland Symphony, West Australian Symphony, South Australian Symphony and Canberra Symphony and with the Edo du Waart and the Concertgebouw Orchestra. McGregor now resides in London with her husband Russell Morgan and each summer for the past 19 years has taught and performed at Hawai’i Performing Arts Festival on the Big Island of Hawaii.

# FACULTY ARTISTS



## **BRENT MCMUNN** – Vocal Coaching Faculty

As Conductor of Opera at the University of Southern California's Thornton School of Music since 2004, McMunn has mentored numerous singers in a vibrant program, and last spring traveled to Finland for Thornton's collaboration on a world premier opera with the Sibelius Academy in Helsinki. McMunn's professional operatic credits include five seasons as conductor at the New York City Opera, plus guest conducting at Arizona Opera, Calgary Opera, Opera Saratoga, Kentucky Opera, and Opera New Jersey. His engagements at Pittsburgh Festival Opera included a highly successful series of five operas by Strauss. Additionally, he has served as an Assistant and Cover Conductor for a combined total of 20 seasons at LA Opera, Santa Fe Opera, New York City Opera, and Dallas Opera. In recent seasons he has led operas in concert for The Opera Buffs Inc, in Los Angeles, featuring illustrious alumni of the program. As a pianist, McMunn has collaborated with eminent musicians, including members of the Juilliard String Quartet, cellist Lynn Harrell, and ECM recording artist Michelle Makarski, in venues such as Carnegie Hall and the Santa Fe Chamber Music Festival. He regularly serves as the official pianist for the Metropolitan Opera's Laffont Competition, Western Region.



## **MAIKA'I NASH** – Vocal Coaching Faculty

Native Hawaiian pianist and vocal coach, Maika'i Nash, returned home to Hawai'i in 2017 to accept the Head of Music and Director of the Orvis Opera Studio Program positions at the Hawai'i Opera Theatre. In his 20 year absence, Maika'i lived abroad, studying at McGill University in Montréal, at the Schubert Institute of Lieder in Vienna, the Centre for Operatic Studies in Sulmona, Italy, and privately in Paris. He spent the bulk of his career in Toronto and Montréal, working for a number of Canadian opera companies, McGill University, the University of Toronto, Western University, the Glenn Gould School, and the Royal Conservatory of Music. Always a voracious adventurer, he also spent 2.5 years in Bogotá, Colombia, working as a vocal coach, répétiteur, and pianist throughout the Colombian capital, and in the other major Colombian cities. Now firmly reestablished in Honolulu, Maika'i launched the new performing arts non-profit group, HI Arts Lab, a company creating experiential moments in music across multiple art forms. The company launched in 2019 to rave reviews and a well attended 3-night run at the Entrepreneur's Sandbox in Honolulu's art district, Kaka'ako and produced an additional 6 experiences throughout the 2019-2020 season to sold-out audiences. Maika'i has performed in a number of renowned masterclass series with international artists that include: Christine Goerke, Barbara Bonney, Elly Ameling, Joan Dornemann, Julius Drake, Edith Wiens, Cynthia Hoffman, Helmut Deutsch, Rudolf Jansen, Robert Holl, Wendy Nielsen, Laura Claycomb & Denise Massé, among others. Growing up in Hawaii, Maika'i studied with Ernest Chang and made his solo debut with the Honolulu Symphony Orchestra when he was 11. As an operatic vocal coach, Maika'i has worked with a number of opera companies throughout Canada, Colombia, and the United States. He has also been engaged as the official collaborative pianist for the Metropolitan Opera Council Auditions for a number of years and has also collaborated and recorded with renowned singers such as Richard Margison, Quinn Kelsey, Audrey Luna, Barry Banks, Mark Doss, Leslie-Ann Bradley & Martha Senn. Maika'i is currently the official pianist for Disney Entertainment for the State of Hawai'i and works with the Hawaii Symphony Orchestra, Manoa Valley Theatre, Diamond Head Theatre, the I'm a Bright Kid Foundation, Gridiron, and is a vocal coach and collaborator with La Sorellanza, a community women's choir in Honolulu.

# FACULTY ARTISTS



## **LAHELA SPENCER** — Hawaiian Studies Faculty

Lahela Spencer was born and raised in Ke‘ei, Kona on the island of Hawai‘i. She has been involved in Hula for the majority of her life and through Hula, the skill of lei making, the knowledge of our environment along with being surrounded by Hawaiian life-ways has enhanced her skills and developed a passion. As a young dancer, Lahela has performed across the globe including Japan, New Zealand, Australia, Tahiti, Samoa, and Taiwan. Along with being in the hospitality industry for over 13 years, she has spent 20 years as a professional entertainer in Hawai‘i and has had the privilege of performing in and serving as a production show manager for some of Hawai‘i’s most prestigious production shows. Her commitment to hula has culminated to the formal right of ‘ūniki as a Kumu Hula under Kumu Hula Ulalia Ka‘ai Berman. Lahela is the Kumu Hula of Kaleiokaulupalai, based in Waimea, Hawai‘i. She is a member of the Leo Kāhoa Steering committee for Huamakahikina, a coalition of Kumu Hula who recently created and ratified a historic Declaration on the Integrity, Stewardship, and Protection of Hula. Kumu Lahela currently serves as a culture specialist and educator for her community and visitors.



## **PAULINA VILLARREAL** — Vocal Faculty | Director, Young Singer Program

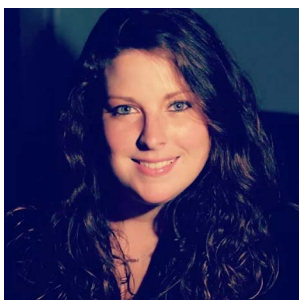
Dr. Paulina Villarreal is a recognized versatile performer, professor, director, and entrepreneur in the music industry. She currently serves as an assistant Professor of Voice at the University of Memphis, Rudi E. Scheidt School of Music, as the Founder/Artistic Director of *Cantos para el Mundo* (Mexico), and the Young Singer director/voice faculty member at HPAF. Trained as a classical vocalist, Villarreal is now in demand for her singing versatility in musical theater, and commercial music genres. Performance highlights include appearances with Cincinnati Opera, Opera Saratoga, Tanglewood Music Center, Boston Pops, Princeton Symphony Orchestra, Opera Memphis, the Kurt Weill Foundation, and others.

# PRODUCTION TEAM



## **MICHELLE HARTMAN** — Costume Designer

Costume designer, Michelle Hartman, is a local business owner on the Hamakua Coast. She has a distinct vision and aesthetic, cultivated through her love of combining art and fashion. Driven by upcycling, her creations are elegant, original, and absolutely unique to each production. Michelle has costumed shows for the Kahilu Theatre, Prince Dance Institute, and the Hawai'i Performing Arts Festival. In 2022 she was awarded Best Costume Design by Broadway World Hawaii for her work with *Hair* and the Hawai'i Performing Arts Festival.



## **BRITTANY MERENDA** — Projection Designer

Award winning projection designer Brittany Merenda has been thrilling and stunning audiences with her groundbreaking designs since her debut in 2010, where she won the Barbizon Award at the Kennedy Center American College Theatre Festival. Specializing in projection mapping on non-traditional surfaces, Brittany has become the resident projection designer for Parallel 45 Theatre Company, which produces a broad repertoire consisting of innovative new works, reinvented classics, and imaginative adaptations. In 2018, Brittany made her Hawaii Performing Arts Music Festival debut with *Alcina*, *Little Women* and *Sweeney Todd*. Recent opera credits include Verdi's *Macbeth* with Opera Tampa, *Tosca* for Opera Grand Rapids, *Carmen* and *A Midsummer Night's Dream* with the Lakes Area Music Festival, *Madame Butterfly* and *A Streetcar Named Desire* for Cleveland Opera Theatre, *Dialogue of the Carmelites* with the Baldwin Wallace Conservatory, and *The Marriage of Figaro* with the University of Tennessee Opera Theatre. Brittany has also designed *Pirates of Penzance* for the Interlochen Arts Academy Opera and the Traverse Symphony Orchestra. Upcoming productions include *The Newsies* for The Rose Theatre in Omaha, and *The Magic Flute* for Lakes Area Music Festival. As the resident projection designer for Parallel 45 Theatre in Michigan, Brittany has designed *Mr. Burns*, *Alice in Wonderland* (2017 Wilde Award Best Play Nominee), *A Christmas Carol in Prose*, *Streetcar*, *Medea*, *Hedwig and the Angry Inch*, *Cyrano*, *The Oz Project*, *R&J* and *The Terrible Tragedy of Peter Pan*. Recent theatre credits include productions of *Van Gogh and Me*, *Harold and the Purple Crayon*, *The Little Mermaid*, and *A Wrinkle in Time* for the Rose Theatre in Omaha. Brittany is based in Traverse City, Michigan and received her Masters of Arts in Digital Arts and Sciences from the University of Florida.

# PRODUCTION TEAM



## **ROBERT PIERCE** — Production Stage Manager

Robert Pierce returns to HPAF for a second season from northeast Ohio, where he is an experienced performer, director, and stage manager of opera and musical theater. On the production end, Robert has notably worked on acclaimed performances of *La Bohème* and *La Traviata* for Cleveland Opera Theater, *Romeo and Juliet* and *Macbeth* for Opera Western Reserve, and the world premieres of Matthew Recio & Royce Vavrek's *The Puppy Episode* at Oberlin Conservatory and Griffin Candey & Caridad Svich's *La Casa de Bernarda Alba* at Baldwin Wallace Conservatory. In the past year, he also managed the southern California premiere of Jake Heggie's *Two Remains* for Lyric Opera of Orange County. As a performer, he has had featured roles in many regional theater productions, including *The Little Mermaid*, *Little Miss Sunshine*, *Billy Elliot*, *Violet*, and *Jerry Springer: The Opera*, as well as productions of *Tosca*, *La Bohème*, *Street Scene*, and *The Pirates of Penzance*. A graduate of Otterbein University and Cleveland Institute of Music, Robert also directs and performs operatic programming for young audiences in his role as Educational Outreach Director for Opera Western Reserve, where he also serves as the resident Production Stage Manager.



## **STEVE SHACK** — Lighting Designer

Steve Shack is a fairly nomadic human who often finds himself designing light for various performances. His most recent work has been seen in Philadelphia, Jacksonville, Hilo, Boston, Traverse City, Cleveland, and NYC. Over the past 20 years, Steve has lit over 250 various productions of Musical Theater, Opera, Dance, and Drama in addition to a few restaurants, museums, and art installations. Steve is the Resident Lighting Designer at Dark Lumen Productions, Cleveland Opera Theater, Baldwin Wallace Conservatory, Hawaii Performing Arts Festival, and Magnificat High School. Often, during summer he teaches and designs lighting at the French Woods Festival of the performing arts. Steve is elated to be back at HPAF to design one of his favorite musicals, *Into The Woods* in addition to *The Magic Flute*. When not in a venue he prefers to body surf in the Pacific Ocean.



# ORCHESTRA



## **ANNA CALLNER PARE — Cello**

Anna Callner Pare began her cello journey through her public middle school music program in her hometown of Seattle, Washington. She holds a double B. A. from Bard College (NY) in Cello Performance and Russian Literature and a Master of Music degree in Cello Performance from Florida International University (FL) where she served as a graduate assistant to the Miami String Quartet. Performances in genres ranging from classical to rock music have led Anna and her cello to venues across the U.S.,

South America, Europe and Asia. In 2015, after a decade of teaching and performing in New York City, Anna relocated to Oahu, Hawai'i where she now resides with her husband, and young son, and daughter. Anna is a member of the Hawai'i Symphony Orchestra, Early Music Hawaii, and the Sovereign Strings Band as well as the Kai String Quartet. Notable performances include the 2016 Miss Aloha Hula competition at the Merrie Monarch Festival, Lantern Floating Hawai'i's Memorial Day 2017, Kumu Hula Keali'i Reichel's Kūkahiki 2018, performing live onstage with rap phenom Eminem, and presenting her original solo compositions for the Moth MainStage. Anna composes and performs music for the Species Unite Podcast, a podcast highlighting the stories of those cultivating a more compassionate world by ending animal suffering and injustice; a fight near and dear to Anna's heart. Anna is a dedicated music educator, running a string orchestra program at Ka'ōhao Elementary School, coaching chamber music at Punahou School and maintaining a private cello studio. [www.annacallnerpare.com](http://www.annacallnerpare.com)

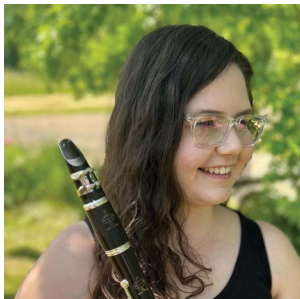


## **SHARON CANNON — Percussion**

Sharon Cannon graduated from Temple University with a Bachelor's degree in Music Performance in Percussion. She has studied with principal percussionists from the Philadelphia Orchestra, Pennsylvania Ballet, Relache and the Philly Pops. In 1989 health issues brought Sharon to Hawaii, where she has since made her home for the last 34+ years. Sharon has performed with the Kamuela Philharmonic Orchestra, the Aloha Performing Arts Company, Hawai'i Performing Arts Festival, the

Hawaii County Band and the Kona Choral Society. Sharon also spends much of her time teaching private music lessons to all ages. Sharon gives back to her community by donating her time to Kamuela Philharmonic Orchestra, a non-profit orchestra on our island, serving on the board as both an Officer and as the Education Chair. Sharon has been leading the Education program since 2016. Her Education team brings music appreciation and master classes to students in our local public and charter schools, assisting underserved school music programs. These programs are responsible for bringing live classical and symphonic music to many of our students here on Hawaii Island. Sharon enjoys swimming in the ocean, sharing time with her partner, enjoying great entertainment, being in nature, solving crossword puzzles and watching our beautiful Kona Sunsets. Sharon's mission in life is to preserve the integrity and experience of live music. She is happiest when sharing the wonderful gift that Music brings with all kinds of people. She is eternally grateful for how Music magically has the power and tendency to bring people together.

# ORCHESTRA



## **RACHEL CLINE** — Clarinet

Clarinetist Rachel Cline, originally from Lake Milton, Ohio, earned her Bachelor's Degree in Music Education from Youngstown State University in 2017. She has worked as a music teacher in the Potter-Dix Public Schools in Potter, Nebraska, and the Hubbard Exempted Village Schools in Hubbard, Ohio. She is also employed by the local nonprofit community arts school, Students Motivated by the Arts, where she teaches preschool and early-elementary music classes. As a freelance musician, Rachel has performed with the Stambaugh Festival Orchestra and Youngstown Symphony Orchestra, as well as in the pit orchestra for numerous high school theatre productions including *The Little Mermaid*, *Chicago*, *The Wedding Singer*, and *Little Women*. An alumni of the Hawaii Performing Arts Festival, Rachel performed as a member of the pit orchestra in the 2017 productions of *Don Giovanni* and *The Mikado*. Rachel is currently pursuing her Masters Degree in Music Performance with Dr. Alice Wang at Youngstown State University.



## **STEVE CRESWELL** — Violin

Steve Creswell traces his love of Mozart to his teenage years playing string quartets in high school and college. He grew up in various midwestern states and attended Indiana University, where his quartet won the coveted Kuttner Scholarship to train and perform--lots of Mozart! After continuing his education at Curtis Institute of Music and the Baroque Performance Institute of Oberlin College and Conservatory, Steve traveled to Toronto, auditioned, and worked professionally in the Tafelmusik chamber orchestra. He first performed Magic Flute there, in collaboration with Opera Atelier and the conductor Andrew Parrott. Steve has recorded on Sony Classical, Vox, and Vivace Records, and has traveled as a performer to Japan, Venezuela, many countries in Europe, and extensively in the US and Canada. Since moving to the West Coast, he has been invited to perform solos with the Pacific Baroque and Seattle Baroque Orchestras. He has played concertmaster with the South Jersey Symphony, Seattle Choral Company, and Seattle Pro Musica; for Opera Bellevue, Steve led the orchestra in a 2007 production of Magic Flute, conducted by Karen P. Thomas. Currently a member of the Northwest Sinfonietta of Tacoma and Puyallup, Washington, he lives with his beautiful spouse in Seattle, and maintains a busy teaching and performing schedule.

# ORCHESTRA



## **MARIO FLORES** — Flute & Piccolo

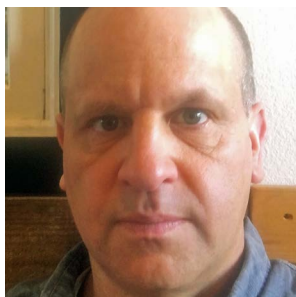
Mario O. Flores grew up in Los Angeles, CA and resides in the beautiful hills of Kamuela on the Big Island with his two dogs, Lola and Moony. He is a devoted Performing Arts educator of 27 years, and serves as the Upper School Arts Department Chair and Director of Music at Hawai'i Preparatory Academy (HPA). Prior to HPA, Mario served in various music teaching and administrative capacities at various Independent Schools on the East and West US Coasts, and served as Director of Orchestras for "Play On, Philly!", an El Sistema non-Profit in Philadelphia. He is excited to be back performing with choral and orchestral ensembles (and in Hawai'i!) particularly after a 5-year hiatus due to a major hand accident. In addition to his work as an ensemble conductor and music educator, Mario has supported and helped lead various Diversity-Equity-Inclusivity initiatives at multiple institutions and currently serves as a Fellow with Hawai'i-based Shanti Alliance. Mario holds a B.A. Honors in Music from Brown University (Providence, RI); an M.A. in Music Education from Columbia University (NY, NY); and, a Fellowship in Orchestral Conducting from Northwestern University's Bienen School of Music (Evanston, IL).



## **AMANDA FRIEDMAN** — Second Horn

Amanda Friedman began her musical studies at age nine playing french horn. She quickly discovered a passion for performance with the Jacksonville Symphony Youth Orchestra, and eventually attended and graduated from Interlochen Arts Academy. Amanda just recently graduated with a Bachelors of Music in Horn Performance from Eastman School of Music and will be continuing her studies as a graduate student at the University of North Carolina School of the Arts. During her studies at Eastman School of Music, Amanda performed with the Rochester Philharmonic Orchestra as a part of a premier of a piece composed by Jeff Beal. She also performed as a part of the Eastman Faculty Octet with notable faculty such as Peter Kurau, James Thompson, and Herb Smith. Amanda will be joining the Piedmont Wind Symphony as a fellow this upcoming year.

# ORCHESTRA



## **JASON GAMER** — Trumpet

Jason Gamer is a conductor, educator, and trumpeter. He has performed in ensembles including the Los Angeles Philharmonic, Kammer Sinfonie Bremen, Moshav, Hollywood Klezmer, Orchestre Surréal, Ukrainian Mosaic Orchestra, the legendary punk rock band Violent Femmes, and on recordings and soundtracks for television and film. Formerly assistant professor at Utah State University and lecturer at California State University Dominguez Hills, he is currently the music

director at Vistamar School. Gamer has written several compositions and improvises in a variety of genres. His original music was featured in *The Redeem Team*, which premiered on Netflix in 2022, and won a Sports Emmy Award for Outstanding Long Documentary in 2023. Gamer leads many ensembles and creative projects, and served as a faculty music director at Hawaii Performing Arts Festival. For 11 years, he was music director and conductor of the Wild Ginger Philharmonic, which he co-founded. Gamer is music director and conductor for the musical at Vistamar, grateful to work with phenomenal cast, crew, and colleagues, with recent full-scale productions including *Mamma Mia! Dogfight*, *Fun Home*, and *RENT*. Gamer is a recipient of the Founder's Award for Humanity in the Arts from ICAP, the International Committee of Artists for Peace.



## **SUE MCGINN** — Flute, Piccolo

Susan McGinn lives in Honolulu and is the principal flutist of the Hawaii Symphony Orchestra. She also held the same position in the Canton (Ohio) Symphony, Gruppo Genovese di Musica Antica (Genova, Italy), Britt Festival (Oregon), Crested Butte Festival (Colorado), Mascagni Festival (Toscana, Italy), and the Skaneateles Festival (New York). Sue has also served as a teacher and clinician at many schools and universities, including the University of Hawaii and Hawaii Pacific

University. She got her education at the University of Michigan, University of Illinois, Indiana University, and at the Royal Northern College (Manchester England). Outside her playing and teaching career, Sue is starting production of two documentary films to educate people about the importance of music in their lives, and is working towards opening her own music school.

# ORCHESTRA



## **CARLO ANDREA MALANIMA – Viola**

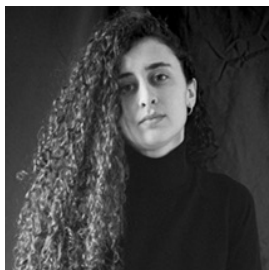
Dr. Malanima has been a professional musician for over 25 years playing in many world's renowned musical institutions and orchestras such as: Youth European Community Orchestra, Orchestre de Chambre de Lausanne (Switzerland), Orchestra della Radio Televisione della Svizzera Italiana in Lugano (Switzerland), Maggio Musicale Fiorentino (Florence -Italy), Orchestra della Toscana (Florence - Italy), Orchestra Sinfonica "Haydn" di Bolzano e Trento (Bozen - Sud Tirolo - Italy), Orchestra Sinfonica della RAI TV di Roma (Rome - Italy), Orchestra dell'Accademia Nazionale di Santa Cecilia (Rome - Italy), Orchestra dell' Arena of Verona (Verona Italy), Orchestra del Teatro Petruzzelli (Bari - Italy), Orchestra del Teatro Carlo Felice (Genova Italy) Dr. Malanima holds a life term position at Teatro Carlo Felice Orchestra where he also plays assistant principal viola. He has also served as Principal Viola in the orchestras of the Puccini Festival in Torre del Lago (Lucca - Italy), the Mascagni Festival (Livorno - Italy), Verdi Festival (Parma - Italy), Crested Butte Music Festival Orchestra (Colorado - USA), The Juilliard Orchestra (1992). As a Chamber musician he has been one of the founding members of the Quartetto d'archi Modigliani with whom he has produced many recordings and concerts. His solo recordings in contemporary music by composer Stefano Giannotti for the deutschland Radio have won the international Karl-Sczuka- Preis in 2003. Dr. Malanima earned a National Doctoral Diploma from the Italian Conservatory and the Advanced Certificate in Music Performance from the Juilliard School in New York where he studied as a Scholarship Scholar. Dr. Malanima has studied with the following teachers : Giusto Cappone, Margaret Pardee, William Lincer, Karen Tuttle, Yurii Bashmet, The Juilliard String Quartet. He has attended summer classes in Meadowmount Summer String Festival, Tanglewood Orchestra Music Festival, Corsi di Alto Perfezionamento Accademia Chigiana Siena. During his orchestra career Dr. Malanima has performed in some of the major concert halls throughout the world with the most acclaimed soloists and conductors such as: Abbado, Muti , Metha, Chailly, Gatti, Thielemann, Luisi, Maazel, and Dudamel.



## **ANNA MARSH – Bassoon**

Anna Marsh, bassoon and orchestra manager is a multi-instrumentalist fluent in Renaissance, Baroque, Classical and Modern styles. Originally from Tacoma, WA, Anna holds a doctorate of music in historical performance from Indiana University and masters in modern bassoon from USC. She has appeared worldwide with Opera Lafayette, Tempesta di Mare, Folger Consort, Musica Angelica, Tafelmusik, Washington Bach Consort and Atlanta Baroque among others. She has taught privately & at festivals at the Eastman School of Music, Los Angeles Music and Art School, Amherst Early Music, San Francisco Early Music Society & Western Double Reed Workshops. She also has been heard on dozens of recordings & on Performance Today, Harmonia, CBC radio & recorded for Chandos, Analekta, Centaur, Naxos, the Super Bowl, Avie, and Musica Omnia's GRAMMY® nominated album, Handel's Israel in Egypt. [www.annamarshmusic.com](http://www.annamarshmusic.com)

# ORCHESTRA



## **VICTORIA MARTINEZ** – Violin

Ms. Martínez Díaz was born in Madrid (Spain) in 1998. She started playing music at the age of three using the Suzuki method. Later she enrolled at the Conservatorio Profesional "Arturo Soria" where she studied for two years with Rubén Fernández. She enrolled the CIEM Federico Moreno Torroba at the age of 13 and finished her intermediate studies there with the Professor Víctor Martín, who taught her self-criticism as a musician and active listening. She completed her higher music studies under the direction of Professor Sergey Teslya, who is a reference point for her, both musically and personally. She has participated in masterclasses with Cristophe Bossuat, Aitor Hevia, Alfredo García, Valeria Zorina, Erzhan Kulibaev, Cibrán Sierra, Simon Blendis, Simon Fischer, Stephanie Gonley, Krzystof Smietana, Krysia Osostowicz, Stanley Konopka, Stephen Rose and Jessica Lee. Ms. Martínez Díaz has ample experience on the stage, having performed in the two halls of the Auditorio Nacional de Música in Madrid, the Teatro Monumental in Madrid, the Auditorio de Zaragoza, the Auditorio de León, the courtyard of the Palacio del Conde de Toreno in Oviedo. At the Church of Santiago de Elizondo, Martínez Díaz performed "La Malagueña" and received recognition from the newspaper "El País". She has recently performed at the Palacio de Carlos V (La Alhambra, Granada) within the International Festival of Music and Dance of Granada, at Severance Hall (Cleveland, Ohio, USA), and has been invited to participate in the international festival "Young Euro Classic" together with the Joven Orquesta Nacional de España at Konzerthaus (Berlin). She is currently studying for a master's degree at the Cleveland Institute of Music (Cleveland, Ohio, USA) thanks to a scholarship that allows her to study with professors Ilya Kaler and Olga Dubossarskaya Kaler.



## **ELVIRA MARTINEZ DIAZ** – Viola

Elvira Martínez, born on June 6, 2003, is a Spanish viola player and a true devotee of music. Initiated into the world of viola at a tender age of 3. Having received formal training at esteemed conservatories like Arturo Soria and Federico Moreno Torroba, Elvira had the privilege of studying under the tutelage of influential mentors such as Cristina Diaz, Laure Gaudron, and Jaime Huertas. These gifted teachers played an instrumental role in shaping Elvira's musical identity. Currently pursuing a viola bachelor's degree at Musikene, Elvira is further refining their skills and exploring new dimensions of musical expression under the guidance of renowned professor Natasha Tchich. In addition to their academic pursuits, Elvira has had the honor of performing with young orchestras such as JORCAM, iuventas, and the professional orchestra OSE. These experiences have allowed Elvira to showcase their artistry alongside accomplished musicians and to contribute their exceptional talents to the collective brilliance of these ensembles. Motivated by an unrelenting passion for music, Elvira constantly seeks to push artistic boundaries, aiming to create transformative and unforgettable musical experiences. Her goal is to inspire and connect deeply with audiences, leaving an indelible impression through their heartfelt and resonant performances.

# ORCHESTRA



## **SOJUNG PARK – Violin**

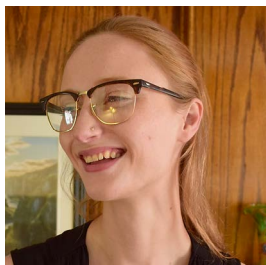
Sojung Park, a violinist from Korea, began her musical journey at the age of 10. She received her early education at the prestigious Sunhwa Arts School and Sunhwa Arts High School. In the United States, she attended Azusa Pacific University on a full scholarship, studying under the guidance of Yuki Mori and Min Jung Park, both esteemed violinists who had studied with Jascha Heifetz. Throughout her career, Sojung Park has showcased her musical prowess in numerous concerts, masterclasses, and festivals. Notably, she mesmerized audiences with her solo performances, including her debut recital at Mozart Hall at the age of 13 and a soloist role with the renowned Korea Academy Symphony Orchestra at just 14 years old. Her talents were further highlighted when she participated in Midori Goto's distinguished Bach Festival in 2018. As an orchestral musician, she played as a substitute violinist with the Hawaii Symphony Orchestra. Additionally, she played as a member of the SOP Ensemble at the Sejong Culture Center. Her talents were also recognized at prominent events like The Well Mission Concert at Disney Concert Hall and the Montecito Music Festival in California. Currently, Sojung Park is dedicated to nurturing and mentoring aspiring musicians, investing her efforts in fostering the growth of the next generation of artists.



## **KATIE RIETMAN – Cello**

Katie Rietman has performed as a cellist on over 60 CD recordings and numerous concerts and radio broadcasts with notable baroque, classical, and romantic period instrument ensembles worldwide. Her performing career has taken her to 21 countries in Europe, North America, New Zealand, the Caribbean, and South America. She is a prizewinner in the Bonporti competition (Rovereto, Italy) and a semi-finalist in the Van Wassenaer competition (Den Haag, Netherlands). Katie studied baroque cello at the Sweelinck Conservatorium in Amsterdam and subsequently lived in Cologne, Germany for ten years, performing with countless European early music groups. Currently living in Santa Fe, Katie Rietman has been the principal cellist of many New York period instrument ensembles, including the Grammy-nominated Trinity Wall Street Baroque Orchestra, where she was continuo cellist for the complete cycle of the Bach Cantatas; the Clarion Society; and with the St. Thomas Boys' Choir. She is also principal cellist of Aradia (Toronto). Katie Rietman is particularly known for her continuo playing and command of several languages, and her collaboration with singers in Baroque opera, oratorio, and cantatas.

# ORCHESTRA



## **GAIA SAETERMOE-HOWARD** — Oboe & English Horn

Gaia Saetermoe-Howard, praised for her “poignant, pliant sound” (New York Classical Review), performs modern and historical oboes and recorders throughout North America. Her recent engagements include performances with Tempesta di Mare, the Handel and Haydn Society, Tafelmusik Baroque Orchestra, Musica Angelica, and the Philharmonia Baroque Orchestra. As an artist-scholar, she focuses on contextualizing global perspectives of Baroque music by tracing the background of historical musical styles around the world. Gaia also teaches in her private music studio, and has taught for renowned programs like S’Cool Sounds, the Wildwood Institute of Music, and the Juilliard Music Advancement Program. A student of Gonzalo Ruiz, Geoffrey Burgess, and Richard Killmer, she holds degrees from the Juilliard School, the Eastman School of Music, and the University of Rochester. She originally hails from Los Angeles, but now lives on the East Coast with her fiancé and their many tropical plants.



## **MARIA SERKIN** — Horn

Dr. Maria Serkin is the Associate Professor of Horn and Assistant Dean of Academic Affairs at the University of North Carolina School of the Arts. She enjoys a multifaceted career as a performer, educator, and administrator. She has held principal horn positions with the Chamber Orchestra of the Triangle, Florida Grand Opera, Palm Beach Symphony, Sarasota Orchestra, Atlantic Classical Orchestra, and the Charlottesville Symphony. Prior to her role at UNCSA, she taught at University of Virginia and the New World School of the Arts. Recent performance highlights include extensive work with the Chamber Orchestra of the Triangle, Charlotte Symphony Orchestra, Palm Beach Opera, Palm Beach Chamber Music Festival, the North Carolina Symphony, and the North Carolina Brass Band. In 2018, she was honored to premiere Kenneth Frazelle’s Harken (Blue Ridge Airs III) at the 50th International Horn Symposium. This summer, she will premiere Shelter by Lawrence Dillon at the 55th International Horn Symposium in Montreal.



## **LORI STUNTZ** — Trombone

Lori Stuntz is a freelance trombonist in the greater Los Angeles area. She has a Doctor of Musical Arts degree from the USC Thornton School of Music, where she also received her Master of Music. She received a Bachelor of Music degree from San Jose State University. Lori plays principal trombone with the Los Angeles Jewish Symphony, trombone with the San Bernardino Symphony Orchestra, and frequently performs with many orchestras including the Santa Barbara Symphony, Riverside Philharmonic, and Symphony Silicon Valley. Dr. Stuntz is on the faculty at Cal Poly Pomona, Riverside City College, and Glendale Community College. As a commercial player, Lori plays lead trombone for the all female big band Maiden Voyage, 2nd for The Mike Barone Big Band and has performed with artists such as DIVA, Nancy Wilson, Jack Sheldon, Diane Schuur, Ray Anthony, Lionel Hampton, Bill Watrous, and The New York Pops. Her international performances include concerts in Germany, Japan, Austria, France, Mexico, and the Caribbean. As a recording artist she has appeared on many major motion picture soundtracks, commercials, video games, and records including Mile 22, Alice in Wonderland, Superman Returns, and X-men 3. She is the first female trombonist to record on a major motion picture soundtrack. Lori is proud to be a performing artist for Greenhoe Trombones.



# ORCHESTRA



## **ALICE WANG** – Clarinet

Dr. Alice Wang is the Professor of Clarinet at Youngstown State University in Ohio. In addition to being an active clinician and performer in the United States and Asia, Alice is a member of the Youngstown Symphony, the Warren Philharmonic Orchestra, the Opera Western Reserve Orchestra, and regularly performs with the Erie Philharmonic and Canton Symphony Orchestra. Alice completed her Doctorate of Musical Arts at the University of Texas at Austin with Richard MacDowell. Alice completed her undergraduate degree at the University of Southern California under Yehuda Gilad and Mitchell Lurie. She later joined the studio of Walter Boeykens of the *Royal Conservatoire of Antwerp* where she received her masters. Alice also earned an artist diploma from the Royal College of Music in Stockholm where she studied with Hermann Stefansson of Royal Stockholm Philharmonic Orchestra. Alice currently lives in Pittsburgh with her husband Kurt, their occasionally ill-mannered dogs Wally and Linus, a flock of hens, and repeatedly failed as a beekeeper.



## **FUMIKO WELLINGTON** – Violin

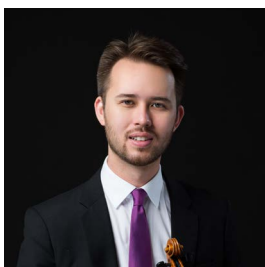
Fumiko Wellington is a freelance violinist residing in Windward Oahu. She is a long-standing member of the Hawaii Symphony Orchestra (former Honolulu Symphony Orchestra). As an arts producer, she has been responsible for the Hawaii Contrabass Festiva., the Studio 909 Presents jazz series, and the salon series, Fresh Chamber. Ms. Wellington is an alumna of the Manhattan School of Music, The Vienna Conservatory of Music, and the Schola Cantorum Basiliensis.

# ORCHESTRA



## **SAYURI YAMAMOTO** — Bass

Sayuri Yamamoto, a member of the Hawaii Symphony, is thrilled to be a part of HPAF for the first time. Born and raised in Japan, she moved to California initially to study English and later received degrees in double bass performance from California State University, Fullerton and the University of Southern California Thornton School of Music. While living in San Diego, she frequently performed with the San Diego Symphony, San Diego Opera, the California Chamber Orchestra, Santa Barbara Symphony, Long Beach Symphony, Riverside Symphony, among other ensembles, and also performed in orchestras and chamber groups in Germany, Spain, Japan, Kenya and Tanzania. During her time at USC, Sayuri also studied viola da gamba and frequently performed on baroque bass, viola da gamba, and violone with the San Diego Bach Collegium and the Kensington Baroque Orchestra. As an educator, Sayuri was the teaching assistant to Dennis Trembly, former principal bass of the LA Philharmonic, at USC, and served as double bass faculty at Biola University. Currently, she teaches bass in Iolani School and Punahou School, coaches at local high schools and youth orchestras, and maintains a private studio.



## **PATRICK YIM** — Concertmaster

Praised for his “deeply expressive, finely nuanced playing” (Strad Magazine) and “superb performances” (Fanfare), Honolulu-born violinist Patrick Yim made his solo debut with the Honolulu Symphony and has performed chamber music with Juilliard, Emerson, St. Lawrence, Pacifica, and Ying Quartet members, and musicians from the Chamber Music Society of Lincoln Center, Cleveland Orchestra, and New York Philharmonic. He performed with the Cleveland Orchestra on tour in the USA and Europe, and at Carnegie Hall with the Emerson Quartet violinists. His recordings have been published by Naxos, Navona, Ravello, and Acis. A 2023 Albany release, including premiere recordings of works by Chen Yi, Zhou Long, and Qu Xiao-song, is forthcoming. He earned his BM and MM from CIM and his DMA from Stony Brook University. Yim previously taught at CIM, Hong Kong Baptist University, Interlochen, and Stony Brook. Yim is Assistant Professor of Violin at the University of Notre Dame. [www.patrickyimviolin.com](http://www.patrickyimviolin.com)

# FEATURED ARTISTS



**BLAYNE ASING** — Headliner, *The Spirit of Hawai'i*

Born and raised on the island of Oahu, Blayne Asing is a self-taught musician who first picked up the 'ukulele and guitar at eight. Besides playing various instruments, Blayne is a prolific songwriter with a distinctive voice and a unique country/folk/island style. He has worked with and collaborated with such local legends as Brother Noland, Henry Kapono and John Cruz. His musical work has garnered him two Na Hoku Hanohano awards including Most Promising Artist (2016) and Single of The Year (2017) for "Molokai On My Mind."



**PHIL KADET** — Headliner, *Changing Keys with Phil Kadet*

Phil Kadet is a multi-talented musician based in New York City. He is a pianist, singer, arranger, music director, producer, conductor, and accompanist, working in many diverse genres of music, from rock and roll to opera. He is a regular solo entertainer, maintaining several weekly residencies in New York City. He is also a keyboardist for the New York rock band Escaper. Since 2013, he has been a collaborative pianist and guest artist with the Hawaii Performing Arts Festival, a world-class training and performance program on the Big Island of Hawaii. Since 2019, he has been the collaborative pianist and music director for Cantos Para Hermanar al Mundo, a concert series presented in Torreón, Coahuila, Mexico. He is a staff pianist for the vocal performance program at NYU Steinhardt. While chiefly a pianist, he also enjoys playing guitar and cycling, at the same time.

# PARTICIPANTS

## ALUMNI GUEST ARTISTS



### **MICHELLE DING** — *Jack's Mother, Into the Woods*

Michelle ShanShan Ding is an opera singer and concert pianist, known for her versatility for performing in both mediums. In 2021, she won the third prize in the NATS competition in the adult category. From 2017 to 2020, she has been a fervent performer of The Greater Lansing Community Concert series. In China she recently performed Yellow River Concerto with the Shanghai Symphony Orchestra and in a solo concert at Shanghai Grand Theatre, both as a piano soloist and singing. A frequent performer in Festivals, in 2015, she performed Rachmaninoff's Piano Concerto No. 2 in Perugia, Italy. In 2014, she was the pianist for Calarts Orchestra and New Century Players under the direction of David Rosenboom. In 2013, she attended the John Perry Summer Festival and performed at the Colburn School of Music in downtown LA. She attended the Hawai'i Performing Arts Festival where she sang Octavia in the scenes of *Die Rosenkavalier*, Zerlina in *Don Giovanni* and Countess in *Le Nozze di Figaro*. She received her Doctor of Musical Arts in Piano Performance from Michigan State University in 2019, and a master's degree in Vocal Arts in 2020. She received master's degree in Piano Performance from University of Michigan with Charles Fisher fellowship in 2016 and her bachelor's degree in Piano Performance with a minor in Voice from California Institute of the Arts in 2014. Currently, she lives in Ann Arbor with her husband Frank and their daughter Alexandra, and runs her own studio offering both piano and voice lessons.

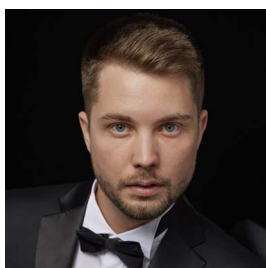
## ENCRANTZ VOCAL PROFESSIONAL FELLOWS



### **ANDREA CHURCH** — *Queen of the Night, The Magic Flute*

Andrea Church is a vocalist from Lindon, Utah and is a first year Master's student at University of Southern California in Vocal Arts. She participated in *Flight* by Jonathan Dove at USC last year as The Controller and recently sang in the scenes program. She is honored to have been awarded an Encrantz Professional Fellowship position in the Hawaii Performing Arts Festival this summer to sing Queen of the Night (*Die Zauberflöte*). She graduated from Utah Valley University in Orem, Utah, where she performed the roles of Rosalinde (*Die Fledermaus*), Violetta (*La Traviata*), Lucia (*Lucia di Lammermoor*), and Mimi (*La Bohème*). Andrea simultaneously studied collaborative piano and was hired onto the UVU Theater arts staff. She was taken on as a TA voice teacher and pianist to accompany shows and programs through Utah Vocal Arts Academy, Utah Shakespeare Festival, and Utah Lyric Opera. Last summer she attended the Mediterranean Opera Studio and Festival in Caltagirone, Sicily, where she performed the roles of Mimi in *La Bohème* and Suor Angelica in *Suor Angelica* and covered the role of Gilda in *Rigoletto*. She also performed with Utah Opera Chorus and Lyrical Opera Theater Utah in their 2021-2022 seasons. She loves learning from her teacher Thomas Michael Allen at USC. Andrea is extremely grateful to the loving and supportive family members, teachers, mentors, friends, and health professionals that have helped her on this journey. In her free time Andrea enjoys baking, hiking, and good company.

# PARTICIPANTS



## **JW KECKLEY** — *Tamino, The Magic Flute*

JW Keckley is a versatile tenor currently based in Kansas City, Missouri. The youngest of three in a boisterous household, JW learned through necessity how to capture the attention of audiences. With leading roles such as Ferrando in *Così fan tutte*, Acis in *Acis and Galatea*, Tamino in *Die Zauberflöte*, Don Ottavio in *Don Giovanni*, and Alfred in *Die Fledermaus* under his belt, JW is at home on the operatic stage. Praised for his innate musicality, JW also has an affinity for the fine detail of art song. Recently, he was lauded as the Outstanding Studio Artist at Central City Opera, covered Goro in *Madama Butterfly* at Sarasota Opera, and looks forward to returning to Tamino as a professional fellow at Hawaii Performing Arts Festival. Also a published, internationally-performed composer, JW's training has given him unique insights that enrich his interpretations of both contemporary and standard repertoire.



## **MICHAEL LEYTE-VIDAL** — *Sarastro, The Magic Flute*

Bass-baritone and Miami native Michael Leyte-Vidal is a graduate of Manhattan School of Music with a Master of Music in Classical Voice. Michael was last seen as a Resident Artist with Opera Colorado during their 40th anniversary season. He sang in the chorus of *Die tote Stadt* and covered *Il Mandarino* in *Turandot* on the mainstage while also touring Colorado in *The Pirates of Penzance* (Sam/Sergeant of Police) and *Romeo & Juliet* (Friar Laurence). Michael is also active in musical theater, having played roles such as Judge Turpin in *Sweeney Todd*, Audrey 2 in *Little Shop of Horrors*, and Ernst Ludwig in *Cabaret*. Later this Summer Michael will be in East Hampton, NY as a Resident Artist with Guild Hall & Bel Canto Boot Camp for a masterclass, and a recital of Bel Canto duets and scenes with world-renowned soprano Lisette Oropesa.

# PARTICIPANTS

## COLLABORATIVE PIANO & STAGE DIRECTING PROFESSIONAL FELLOWS



**META ČERV** — Principal Pianist, Assistant Music Director,  
*The Magic Flute*

Slovenian pianist Meta Červ began her musical journey in Ajdovščina, her hometown, at the age of eight. At seventeen, she joined Denys Masliuk's class at Koper's Artistic High School, where she honed her skills for three years. In 2016, Meta won gold and silver medals at Slovenia's TEMSIG piano competition. That same year, she was admitted to Geneva University of

Music, pursuing her Bachelor's degree with Fabrizio Chiovetta in Neuchâtel. In June 2019, Meta graduated with honors, receiving the prestigious Maurice Espin prize for her exceptional recital. Continuing her education, she pursued a Master's degree in interpretation under Professor Dominique Weber, graduating in June 2021 under Ricardo Castro's guidance. Eager to excel in accompaniment, Meta embarked on a dual Master's program in pedagogy and accompaniment, currently studying with Nina Uhari and James Alexander. Throughout her studies, Meta remained actively engaged in chamber music groups and performed in esteemed festivals such as GM Oder Ljubljana, Rhonfestival für Liedkunst in Valais, Lied PerArtem Festival in Slovenia, and Geneva's Fête de la Musique. Notably, Meta will be joining conductor Guillaume Tourniaire as the pianist in the fall production, reviving Camille Erlanger's captivating opera *La sorcière*.



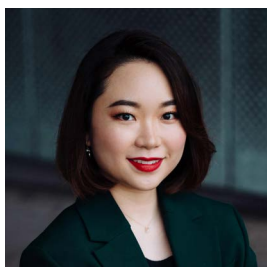
**JOI ELISE GREEN** — Assistant Stage Director,  
*Into the Woods*

Joi Elise Green is a director, writer, and stage manager raised in Austin, TX. She enjoys developing new plays and finding immersive, unconventional ways to bring stories to life. Joilynn has enjoyed working with the Vortex Repertory Company, New Manifest Theatre Company, Spectrum Theatre, and Austin Shakespeare. Joi recently completed an apprenticeship with The

Old Globe Theatre in San Diego. She became a part of the New Manifest Ensemble when she worked on their 2020 production of *good friday* as an Assistant Director and Stage Manager. Recently, Joi was an Assistant Stage Manager for The Vortex's *Ride the Wave* directed by Teresa Cruz along with Oktavia Latoi's one woman show *i see you, you are seen*.

# PARTICIPANTS

## COLLABORATIVE PIANO & STAGE DIRECTING PROFESSIONAL FELLOWS



**HARUNA GLORIA KAMO** — Assistant Stage Director, *The Magic Flute*

Haruna Gloria Kamo is a young and aspiring opera stage director. Most recently she assistant directed at the Staatstheater Nürnberg, and in the New York City area at On Site Opera, City Lyric Opera and the New Jersey Festival Orchestra. She has studied at the Mannes School of Music and graduated with a master's degree in Voice. She was born in Champaign,

Illinois and has spent most of her childhood in Japan. From the age of 6 she has been trained as a musical theatre actress and from the age of 14, an opera singer. During high school, she studied abroad in Germany for one year and she is fluent in 5 languages. She has participated in young artist programs such as the Bologna International Opera Academy, Classic Lyric Arts, Savannah Voice Festival, and the Canadian Vocal Arts Institute Summer Program (CVAI). This summer, she is participating in the Hawai'i Performing Arts Festival with a Professional Fellowship, and assistant directing the opera *The Magic Flute*. She will also be joining the Chicago Summer Opera and assistant directing the production of *Carmen*.



**BENJAMIN KEATING** — Principal Pianist, Assistant Music Director, *Into the Woods*

Benjamin Keating is an American classical pianist from Champaign-Urbana, Illinois studying Piano Performance with an emphasis in Collaborative Piano with Dr. Catherine Kautsky at the Lawrence University Conservatory of Music. Keating began piano studies at age 5; since then, he has become an active performer, devout collaborator, and a lifelong musician. At the

piano, Keating performs a wide variety of the classical repertoire, with a focus on music written after the turn of the 20th century. He champions new music, exploring the works of living composers and the works of his colleagues. Keating has earned first-place awards with the Schubert Club and MTNA Wisconsin competitions, and recently won the Lawrence Symphony Orchestra Concerto Competition. Keating has engaged with the Mostly Modern Festival and with the InterHarmony International Music Festival in Italy and at Carnegie Hall. Keating's ensemble experience ranges from musical theatre to church choirs to garage rock bands to Balinese gamelan orchestras. Keating also studies conducting and serves as a rehearsal pianist and conductor with the Lawrence University Opera Theatre. He plans to study music in Vienna this fall. Keating thanks his family for their never-ending love and support. [www.benjaminkeatingmusic.com](http://www.benjaminkeatingmusic.com)

# DEVELOPING SINGERS



## **LEILA ABOU-JAOUDE** — Baker's Wife, *Into the Woods*

Leila Abou-Jaoude is a second-year master's student studying vocal performance at Boston University. Her performances include *Hair* (Marjorie/Crissy U/S), *La Calisto* (Linfea), *Cendrillon* (Maguelonne), *Godspell* ("Day by Day" Soloist), *Guys and Dolls* (Sarah Brown), and the McCarter Theatre's workshop of *The Connector*, a musical in development by Jason Robert Brown. She is a graduate of Princeton University, where she presented an original musical about German Romantic concert pianist and composer Clara Schumann. She is excited to return to the Hawaii Performing Arts Festival for this journey *Into the Woods*!



## **MATTHEW ALEXANDER** — Baker, *Into the Woods*

Matthew Alexander is a rising second year masters student in the Graduate Vocal Performance Music Theatre track at NYU Steinhardt. Prior to moving to New York, Matthew attended and received a BFA in Music Theatre from Wichita State University. He is so beyond thrilled to get the chance to revisit and rediscover *The Baker* after playing it in high school. Other favorite roles include Moonface Martin in *Anything Goes*, The Beast in *Beauty And The Beast*, and Ursula in *The Little Mermaid*. In 2020, during his junior year of undergrad, Matthew placed fifth in the West Central NATS competition. Matthew was also selected as a high schooler for the first ever Kristin Chenoweth Broadway Bootcamp and returned to intern as recently as last summer. Matthew would like to thank his family because without them he wouldn't be here doing what he loves.



## **MADELINE ANDRIESSEN** — Second Lady, *The Magic Flute*

Madeline Andriesen, *soprano*, is a current Masters of Vocal Arts Performance student at the University of Southern California Thornton School of Music (USC). She graduated with a dual degree Bachelors of Music in Vocal Performance and Music Education from the University of Alaska Fairbanks (UAF). Growing up in Haines, Alaska, Andriesen sang in multiple musical groups and honor choirs. Through her time at UAF and USC she competed and performed in vocal competitions and ensembles as a soloist including the Fairbanks Symphony Orchestra Concerto Competition, Anchorage Concert Chorus Vocal Scholarship Competition, National Association of Teachers of Singing, Fairbanks Symphony Orchestra, Choir of the North, Ensemble 64.8, Inner City Youth Orchestra of LA, City of Santa Monica Art of Recovery program, and various other ensembles. Andriesen has also conducted ensembles such as the Northland Youth Discover Choir and the Fairbanks West Valley Concert Band, Symphonic Band, and Steel Drum Band. Most recently, Andriesen performed Contessa in *Le nozze di Figaro* with the Austrian American Mozart Academy, Stewardess in Jonathan Dove's *Flight* and Erste Dame in scenes from *Die Zauberflöte* with USC Thornton Opera, assorted scenes with the Fairbanks Summer Arts Opera Program, and session singing with the USC Department of Cinematic Arts. The summer of 2023 will find Andriesen performing at the Hawaii Performing Arts Festival as Zweite Dame in their production of *Die Zauberflöte*.



# DEVELOPING SINGERS



## **MARINA BEESON** – Pamina, *The Magic Flute*

Marina Beeson is a soprano from Dunkirk, Maryland. Her recent operatic roles include Pamina in *Die Zauberflöte* (Hawaii Performing Arts Festival), Tina in *Flight* (University of Southern California Thornton Opera), and Amahl in *Amahl and the Night Visitors* (New England Conservatory). As a member of New England Conservatory's Undergraduate Opera Studio, Marina portrayed the roles of Marcellina in *Le Nozze di Figaro*, Amy in *Little Women* (Young Artist Initiative), and Roselinde in *Die Fledermaus*. Passionate about performing new works, she premiered Lila Quillin's "Elohim Bekirbah", at the 2020 International Saxophone Symposium after earning the Calvert County Arts in Education Award. In 2021, Marina won the gold prize at the World Classical Music Awards vocal competition. Her past summers have been spent participating in the Berlin Opera Academy (2022), and Bard College Conservatory's Vocal Arts Summer Institute (2020). Marina is a vocal student of Thomas Michael Allen at the University of California Thornton School of Music, where she will graduate with her Master of Music in Vocal Arts degree in May of 2024. Marina graduated from New England Conservatory in May of 2021 with her Bachelor of Music in Vocal Performance degree as a student of Lisa Saffer.



## **MADELINE BELCHER** – Lucinda, *Little Red Riding Hood* (understudy), *Into the Woods*

Madeline Belcher is a recent high school graduate and will be moving on to study musical theater at Oklahoma City University in the fall. Recently she appeared as Flounder in *The Little Mermaid* and was the student director for the One Act Play *That Goes Wrong*. Madeline was nominated in the category of best leading actress in a musical for the Kansas City Blue Star Awards for her performance of Laurey Williams in *Oklahoma!* She has also appeared in high school productions of *Peter and the Starcatcher*, *Into the Woods*, and numerous other plays.



## **AUDRA BOWERS** – Cinderella, *Into the Woods*

Audra Bowers is a New York City based singer, actor, and voice teacher. She is a native of North Carolina where she received her Bachelors of Music in Classical Voice from the University of North Carolina at Greensboro. Some credits from her time there include *Hänsel und Gretel* (Hänsel) and *Die Zauberflöte* (Second Spirit). She has received consecutive awards through NC and Mid-Atlantic Regional NATS in both classical and musical theatre divisions. She also performed with Bel Canto Company, the premier choral ensemble of central North Carolina. Audra is currently pursuing her MM in Vocal Performance with a concentration in Musical Theatre as well as an Advanced Certificate in Vocal Pedagogy at NYU Steinhardt. While working towards her masters degree, she serves as an Adjunct Professor of Voice at NYU and President of the NYU SNATS Chapter. She is a student of Professor David Sisco.

# DEVELOPING SINGERS



**MADELYN BRODOCK** — *Third Spirit, Third Lady (cover), The Magic Flute*

Madelyn Brodock is a current vocal performance student at St. Olaf College with Dr. KrisAnne Weiss. A recent alumni of Interlochen Arts Academy, she has been featured in many operas including *Le Nozze di Figaro*, *Gianni Schicchi*, *The Tender Land*, *Dialogues of the Carmelites*, *The Little Prince*, and *Le Dernier Sorcier*. Most recently, she was involved in a collaborative production of Gilbert and Sullivan Operettas and will be performing in *Cendrillon* next January. Besides singing, she is an avid equestrian and hopes to become Alexander Technique certified after college.



**ANDREA BUSH** — *Florinda, Cinderella (understudy), Into the Woods*

Andrea Marie Bush (she/her) is excited to spend a summer in beautiful Kona with HPAF! She was recently seen on the 1st National Tour of *Fiddler on the Roof* directed by Bartlett Sher. Past credits include *Brigadoon* (Fiona), *Little Women* (Meg March), *The Secret Garden*, and *The Mystery of Edwin Drood*. B.M. & M.M. / Advanced Certificate in Vocal Pedagogy (incoming fall class), NYU Steinhardt. Endless thank you's to family & friends, especially her three nieces for reminding her the importance of making believe.



**DONATO CELENTANO** — *Rapunzel's Prince, Steward, Narrator (understudy), Mysterious Man (understudy), Into the Woods*

Baritone Donato Celentano is a dedicated, versatile, and passionate artist. Recognized across the country as one of opera's brightest young prospects as an equal lover of both operatic and oratorio repertoire, Mr. Celentano's vocal and dramatic versatility has allowed him to portray the roles of Masetto in Mozart's *Don Giovanni* and Le Roi in Massenet's *Cendrillon*. His love for oratorio work has led him to be the featured soloist for Mozart's Coronation Mass and Requiem with the Vienna boys choir. In addition to his passion for classical music, Donato has also expressed his love for modern music by singing backup for Barry Manalo and Queen Latifah. Baltimore-based Donato regularly performs repertoire spanning opera, oratorio, musical theatre, art song, and ensemble work. Donato loves to share his music by participating in the Matheny project, teaching, and singing for adults with Cerebral Palsy, Down syndrome, etc. Donato also sings and organizes for the Presbyterian Interfaith Hospitality Network. Sharing and teaching music for struggling families. A graduate from The Boston Conservatory under the tutelage of David Small, Donato continues to further his performance studies by completing his M.A. degree in Voice Performance and pedagogy at the Peabody Institute under Randall Scarlatta.

# DEVELOPING SINGERS



## **DAXTON CHAPPELL** — **Jack, *Into the Woods***

Daxton Chapell is very excited to be in his first production with HPAF. He is a recent high school graduate who will be heading to the University of Central Florida to pursue a BFA Musical Theater degree. He has performed in over 25 productions with the Florida Academy of Performing Arts, Patel Conservatory, and Newsome High School. Some of his favorite roles include Jekyll/Hyde in *Jekyll & Hyde*, Frank Abagnale Jr. in *Catch Me if You Can*, Frederick Frankenstein in *Young Frankenstein*, Pirate King in *Pirates of Penzance*, and Franklin Hart Jr. in *9 to 5*. In addition to theater, Daxton has performed in numerous choruses and a competitive show choir throughout high school and is a competitive swimmer. In his free time, he loves to volunteer with Dancing for a Difference, a non-profit performing arts studio that offers affordable classes to children of all abilities including children with special needs.



## **KATRINA COLE** — **Second Spirit, Second Lady (cover), *The Magic Flute***

Katrina Cole is excited to return to the Big Island this summer to participate in Hawai'i Performing Arts Festival's production of *Die Zauberflöte*. Ms. Cole is a recent graduate of Penn State University where she studied vocal performance with Dr. Rachel Copeland. While at Penn State, Ms. Cole performed the roles of Berta (formerly Bartolo) in *Le Nozze di Figaro* and Blanche de la Force (cover with performance) in *Dialogues of the Carmelites*. Ms. Cole is excited to continue her studies at the University of Memphis pursuing her Masters with Dr. Paulina Villarreal.



## **CAROLINE COLVIN** — **Baker's Wife, *Into the Woods***

Caroline Colvin is a multi-hyphenate artist with robust experience in straight, musical, and operatic theatre. Making people laugh is her thing! Caroline is a recent graduate of the Peabody Institute of the Johns Hopkins University where she received her Bachelor of Music in Vocal Performance under the tutelage of Dr. Carl DuPont. Recent credits include Adult Women in *Spring Awakening* (dir. Hester Kamin), Dorothée in *Cendrillon* (dir. Mary Duncan Steidl), the Baker's Wife in *Into the Woods* (dir. Brandon Bieber), Eddie/Avatar in *Earth to Kenzie* (dir. Alison Moritz), Kitty in *The Drowsy Chaperone* (dir. Claire Edmonds), Aunt March in *Little Women* (dir. Nadia Guevara), and Florence in *The Curious Savage* (dir. Matt Neal). Both onstage and off, Caroline is passionate about the intersection of art and social justice. She spent two summers interning with Johns Hopkins University's Community Impact Internships Program, uplifting the work of local community arts organizations and teaching fundamentals of stage performance to Baltimore youth. Caroline holds the Annie Wentz Memorial Prize in Voice from the Peabody Institute and won First Prize for Upper College Musical Theater Treble Voice at the 2022 MD-DC NATS Competition. [www.carolinecolvin.com](http://www.carolinecolvin.com) / IG: @caroline.colvin

# DEVELOPING SINGERS



## **ELLA DOLYNCHUK** — Little Red Riding Hood, Into the Woods

Ella Dolynchuk (she/her) is a recent graduate of Oklahoma City University. Regional credits include Spring Awakening at the Lab Theater and with the Emerging Professionals Ensemble. OCU credits include *Children of Eden* (Eve), *The 25th Annual... Spelling Bee* (Olive), *Five Women Wearing the Same Dress* (Meredith) and the world premiere of *June by the Sea* (June). Film: *Keep it Quiet* (Riley). She made her directing debut this spring at OCU with a new musical entitled *Fallen Star*. She is incredibly grateful to be working with HPAF and to be involved with this community!



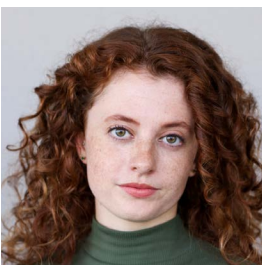
## **KATHERINE FISFIS** — First Lady, *The Magic Flute*

Katherine Fisfis is a 21-year-old soprano from Pittsburgh, Pennsylvania. This fall, Katherine will begin her senior year studying voice performance with Dr. JR Fralick at the Baldwin Wallace Conservatory. Recent roles include Virtù in *L'incoronazione di Poppea* and Deino in the American midwestern premiere of *We've Got Our Eye on You*. She is grateful to have the opportunity to perform her first *Die Zauberflöte* in such a special place. Katherine would like to thank her teachers, friends, and family for helping her get to where she wants to be.



## **ANALEIGH FLIEGER** — Papagena, Pamina (cover), *The Magic Flute*

Analeigh Flieger is a 20-year-old undergraduate voice performance student. She currently studies at Baldwin Wallace Conservatory with Ms. Nancy Maultsby. In her time at undergrad thus far, she has been in many shows including *Virtually Dead* as PJ - a new mini opera by Jerry Dye and Kamala Sankaram, Mozart's *Le Nozze di Figaro* as Barbara, Monteverdi's *L'incoronazione di Poppea* as Valletto, and Nkeiru Okoye's *We've Got Our Eye on You* as Pemphredo. She's attended a number of young artist programs, most notably, Curtis's Summerfest with Mikael Eliassen and the Trentino Music Festival. While in Trentino, Analeigh studied and performed the roles of Zweiter Knabe in Mozart's *Die Zauberflöte* and Sandman in Humperdinck's *Hänsel und Gretel*.



## **CLAIRE FREDRICK** — First Spirit, First Lady (cover), *The Magic Flute*

Claire Fredrick is a recent graduate of Abilene Christian University, and she was involved in several shows during her time there. Most recently, Claire took on the role of Carrie Pipperidge in Rodgers and Hammerstein's *Carousel*. She also performed the title role in *Amahl and the Night Visitors* by Gian Carlo Menotti as well as working in the ensemble of Disney's *The Little Mermaid* and Engelbert Humperdinck's *Hänsel und Gretel*. After Claire received her Bachelor of Music in Vocal Performance from ACU, she plans to attend New York University to receive her Master of Music in Vocal Performance. This is her first time working with The Hawaii Performing Arts Festival as well as being in Hawaii. Needless to say, she is incredibly excited to be here!

# DEVELOPING SINGERS



## **PAULINA DE LA FUENTE** — **First Lady, *The Magic Flute***

Paulina de la Fuente started her Opera studies in 2015 at the music highschool “Silvestre Revueltas” in Durango, México. From 2016 to 2017 she attended the intensive Opera seminars directed by the international vocal coach and pianist, Maestro Ángel Rodríguez. Doing the roles of Susanna (*Le Nozze di Figaro* 2016), Adina (*L’elisir d’amore* 2017) and Donna Elvira (*Don Giovanni* 2017), also covering the role of Zerlina in this last production. She recently graduated as a

Voice Performance Major from the Boston Conservatory at Berklee under the studio of Kathryn Wright in May of 2023. During her time at BoCo she got cast as the cover of Susannah in Carlisle Floyd’s *Susannah* and as Babarina in Mozart’s *Le Nozze di Figaro*.



## **RYAN HANGER** — **Cinderella’s Prince, *Wolf, Into the Woods***

Ryan Hanger is a second-year Classical Voice Performance master’s student at the Steinhardt School at New York University, studying under Justin John Moniz. His most recent work includes Curly in *Oklahoma* in South Africa, the title role of Mozart’s *Idomeneo* at NYU, and the First Sailor in *Dido and Aeneas* at NYU. He received his undergraduate degree in Voice Performance in 2021 from Southern Methodist University in Dallas, Texas. He has been a finalist in the Eastern Region as well as Texoma Region NATS chapters. Other

performance credits include Joe Crowell in *Our Town* by Ned Rorem, Ezekiel Cheever in *The Crucible* by Robert Ward, and Lieutenant Cable in *South Pacific*. In addition to his Bachelor of Music, he holds a second degree in Business Management.



## **LULU HASSANEIN** — **Rapunzel, Cinderella (understudy), *Into the Woods***

Lulu Hassanein is a Maryland-based, versatile storyteller, performing across many genres: classical and contemporary, operatic, musical, and straight theatre. Previous roles include Yasha in *The Cherry Orchard* (JHU Theatre), Miranda in *Coastal Disturbances* (Barnstormers), and Madge in *Picnic* (Barnstormers). She currently serves as the Director of Publicity for the JHU Barnstormers. Lulu is pursuing her Bachelor’s at the Peabody Institute of Johns Hopkins University majoring in Vocal Performance and Music Education.



## **JASON (JUNSEOK) HWANG** — **Papageno, Speaker, *The Magic Flute***

Jason (Junseok) Hwang is a recent graduate from The Juilliard School where he studied with William Burden. His past operatic appearances include Nick Bottom in *The Midsummer night’s Dream* by Britten, Il Marito in *Amelia al Ballo* by Menotti, Johannes Pa Zegner (cover) in *Proving Up* by Missy Mazzoli and Maestro Spinelloccio in *Gianni Schicchi* with Juilliard Opera, as well as Peter from *Hansel and Gretel* by Humperdinck with Chautauqua Opera, and will be

making his role debut of Papageno in *Magic Flute* in Hawaii Performing Arts Festival. Jason also has won a 2nd place award in Korea-China international competition which earned him an invitation to China.

# DEVELOPING SINGERS



## **CAMDEN KEGLEY** — Monastatos, *The Magic Flute*

Camden Kegley, tenor, is a recent graduate of the University of Memphis with a Bachelors of Music in Vocal Performance and Minor in Italian. In the 2022-2023 season at University of Memphis he assistant directed *Trouble in Tahiti*, played Harry Benn in an abridged production of Ethel Smyth's *The Boatswain's Mate*, and Parpignol in *La Bohème*. Outside of school he performed in the chorus of Opera Memphis' production of *Tosca* and the role of the Page in *Amahl and the Night Visitors* with Memphis Light Opera. Next year he will be an English teaching assistant at Istituto d'Istruzione Superiore Stanga and Istituto d'Istruzione Superiore Antonio Stradivari in Cremona, Italy.



## **KAROLINE LARSEN** — Jack's Mother, Baker's Wife (understudy), *Into the Woods*

Soprano Karoline Larsen has vast choral and performance experience from participating in Tennessee's first collegiate performance of a Choral Opera, *Radio Hour* by Jake Heggie to chorus member in Vivaldi's *Gloria*, chorus member in Puccini's *La Bohème*, soloist in University Singers' performance of "Happy We" from *Acis and Galatea*, chorus member for the University of Memphis' Choral Program in Greece, participated in Memphis Youth Chorale led by Dr. Emily Frizzell from 2016 until 2022, and participated in University of Memphis' Jazz Singers as lead for the 2022-2023 Academic School Year. She is also a participating member of the University's flagship ensemble University Singers who toured the state of Tennessee in 2022, a participating member in the University's Chamber Choir who performed at the Tennessee Music Educators Association Conference in 2022, and the current president of the University's *[blu]* a cappella group who was selected for the National A Cappella Conference in Orlando in 2022 and the OneVoice Invitational of 2023. Karoline is currently in her third year at the University of Memphis and has recently been selected as the recipient of the Dr. Barbara Mashburn Choral Music Education Scholarship and has been selected for the collegiate chapters of Omicron Delta Kappa National Honors Society and Phi Kappa Phi National Honors Society which recognizes the top 7.5% of juniors and seniors.



## **NOELANI LOUGHERY-KAWAIHOA** — Second Spirit, Second Lady (cover), *The Magic Flute*

Noelani is an accomplished performer, dancer, and vocalist. She is a recent graduate of Parker School, Waimea and will be pursuing a Bachelor of Music in Vocal Performance at the San Francisco Conservatory of Music this fall. Noelani's dance credits include the Prince Dance Institute, West Hawaii Dance, Break the Floor's Jump Tour, 24/7 Tour, Nuvo Dance Competition in Orlando & SLIDE tap intensives in CA. Noelani's classical voice training includes the Hawaii Performing Arts Festival Young Singers Program and she has been a member of the Kahilu Youth Troupe for many years, performing in several productions at Kahilu.

# DEVELOPING SINGERS



## **MUKUPA LUNGU** — Florinda, *Into the Woods*

Mukupa Lungu is a rising senior from Lusaka, Zambia, pursuing a degree in Musical Theatre and Psychology at Augustana College in Rock Island, Illinois. Before Augustana she performed in multiple productions from primary school through to where she participated in high school productions of *The Tempest* and *A Midsummer Night's Dream* as well as traditional Zambian productions. At Augustana she was the Narrator in *Threepenny Opera*, and she performed as Fraulein Schneider in *Cabaret*.



## **BENITO MERCIA** — Puppeteer, Jack (understudy), Steward (understudy), *Into the Woods*

Benito (Beni) Mercia has studied voice, dance, and acting since the age of 12. He has appeared in multiple Kahilu Theatre Youth Troupe productions regularly since then. His teachers have included Beth Dunnington (acting), Angel Prince, dance and Val Underwood, voice and piano. Beni started with HPAF in the Young Singer Program in 2017 and is planning to study the performing arts in college in 2024.



## **AIMEE MEUNIER** — Lucinda, Little Red Riding Hood (understudy), *Into the Woods*

Aimee Lyn Meunier is thrilled to be making her Hawaii Performing Arts Festival debut. Aimee has graduated from Rhode Island College with her BA in Musical Theatre class of 2022. She has just finished *James and The Giant Peach* as Ladybug with Spotlight Event Center in Florida. Her next stop is *Evil Dead The Musical* as Cheryl at Cumberland Theater in Maryland. Some of her favorite roles include: Ursula *The Little Mermaid*, Princess Fiona *Shrek The Musical*, Princess Winnifred *Once Upon a Mattress*, and Feature Dance Ensemble in *Young Frankenstein*. Aimee would like to thank everyone for this amazing opportunity and wishes the cast and crew a magical run! [AimmeELynMeunier.com](http://AimmeELynMeunier.com)



## **TREY MILCOWITZ** — First Priest, Armored Man, Tamino (cover), *The Magic Flute*

Trey Milcowitz is a rising junior MT at Baldwin Wallace and is so excited to be joining the Hawaii Performing Arts Festival for the first time! Originally from Tampa Florida, Trey has been studying vocally for 12 years. He made his regional debut last summer as The Minstrel in *Something Rotten!* at the Beck Center for Performing Arts. Trey was just recently Fredric in Baldwin Wallace's production of *The Pirates of Penzance*, which marked his first opera! Some of Trey's other credits include Dimitri (*Anastasia*), Oscar D'armano (*The Wild Party*) and Tony in *West Side Story*. Trey would like to thank the entire team at HPAF for this opportunity, his voice teacher Cynthia O'Connell, and his amazing parents Tammy and Len! @Trey.jbm

# DEVELOPING SINGERS



## **GRANT PECK** — Papageno, Speaker, *The Magic Flute*

Grant Peck recently completed a Master of Music in Vocal Performance and Pedagogy at the University of Houston Moores School of Music studying under Professor Hector Vasquez. Grant has been contracted to sing with Houston Grand Opera's Chorus for their 2023-2024 season. In the 2022-2023 season, Grant was featured with Moores Opera Center as La Bête/Avenant/Prince in *La Belle et la Bête* by Phillip Glass and as Eisenstein in *Die Fledermaus* by Johann Strauss. In the 2021-2022 Moores Opera Center season, Grant performed Krušina in *The Bartered Bride*, and Mr. Lindquist in *A Little Night Music*. Grant received his Bachelor of Music in Vocal Performance from the University of Cincinnati, College-Conservatory of Music in 2021, where he performed Papageno in Mozart's *Die Zauberflöte* and Pastore in Monteverdi's *L'Orfeo*.



## **KATHERINE POUND** — Cinderella, *Into the Woods*

Katherine Pound is currently pursuing a Master of Music in Musical Theatre Voice Performance at the New York University (Steinhardt). Ms. Pound is from Erin, a small town in Ontario, Canada. From a young age, she has always had an interest in the musical world. It was not until elementary school, when she performed "Somewhere Over the Rainbow" that she realized she loved singing. Since that day she has been cast in several productions, has completed a Bachelor of Music in classical voice performance at Manhattan School of Music and continues to pursue her passion at NYU. Ms. Pound does not know where this musical journey will take her; although it is certain she will be on a stage. Her goal is to connect intimately with her audiences, have them feel passion, fear and joy through her voice and keep them coming back for more. She would love to be able to create positive change in society using her voice in whatever way she can.



## **ALINA REITZ** — Granny, Giant, Cinderella's Mother, Rapunzel (cover), *Into the Woods*

Alina Reitz will be attending Santa Barbara City College as a Music major where she hopes to later transfer into a vocal performance program. She spent the last year as a Theater History and Performance Texts major at Marymount Manhattan College, with voice training under the incredible Justin John Moniz. Her credits include Ventura High School's productions of *Cinderella*, playing Cinderella, and *You're a Good Man Charlie Brown*, playing Sally Brown. She was also in the Rubicon Summer Theater's production of *Les Misérables*, directed by Kirby Ward. Last summer, Alina got the opportunity to sing in Carnegie Hall with the VHS Chorale directed by Kuanfen Liu. She's played viola for seven years and was second chair in the Ventura High School String Orchestra Honors for four years. Alina holds a deep passion for singing and performing. She is incredibly thrilled and honored to be a part of the Hawaii Performing Arts Festival! She wants to thank her current voice coach Dauri Kennedy for all the help and encouragement. As well as her mother, Robin Reitz for always supporting and believing in her dreams and goals.



# DEVELOPING SINGERS



## **CAROLYN SCHROCK** — *Third Lady, The Magic Flute*

Carolyn Schrock is a sophomore undergraduate at William Jewell College in Liberty, Missouri pursuing a degree in vocal performance. Carolyn is involved in the top choirs at Jewell. Past roles and awards include: *Dido and Aeneas* with the Boston Camerata, Barbarina in *Le Nozze di Figaro* with the Jewell Artist Diploma, Chorus in *Trial by Jury* with Landlocked Opera, awards in NATS, Schmitt voice competition, and more. Schrock was also a guest singer with the Missouri Symphony for their 3rd annual Juneteenth Celebration. Carolyn has also been featured with the Lyric Opera of Kansas City with community events. Outside of school, she is also an alto section leader at First Presbyterian Church of Independence MO.



## **CHRISTIAN SHAFFER** — *Rapunzel's Prince, Steward, Into the Woods*

Christian demonstrated a lifelong passion for the performing arts. From an early age, Christian engaged in local theater productions such as *Lion King*, *Music Man*, and *Aladdin*. Throughout high school, he embraced prominent roles in *Calamity Jane*, *Grease*, and *The Addams Family*, while also excelling in honor's choir, the concert choir, *Hiawatha Headliners*, and statewide competitions. Continuing his artistic journey in college, Christian contributed to the theater production *I Love, You're Perfect, Now Change*, joined the renowned collegiate choirs, *Lads & Lasses*, at Highland Community College, and is a current member of the collegiate choir group at Kansas State University.



## **EVAN SHIELDS** — *Jack, Into the Woods*

Evan Shields is excited and honored to be making his big island debut with the Hawaii Performing Arts Festival! Evan is a recent high school graduate from Charles J. Colgan Sr. High School in Manassas, Virginia. Evan has studied with prestigious programs such as the Washington National Opera Institute and the Virginia Residential Governors School for the Fine and Performing Arts. Evan also performed in the world premiere of *Queen of the People's Hearts* (featured ensemble) at the Hylton Performing Arts Center. In the fall, Evan will attend New York University to study Vocal Performance: Musical Theatre.

# DEVELOPING SINGERS



## **SOLOMON SHUMATE** — **Second Priest, Armored Man, *The Magic Flute***

Solomon Shumate, 20, born and raised on Hawai'i Island returns to Hawaii Performing Arts Festival for a fourth summer. He has performed in several Kahilu Theatre productions including musicals such as *Spring Awakening* (2018), *South Pacific* (2018), *West Side Story* (2019), and was staged to perform as Sergei in *Matilda* (2021) prior to its unexpected cancellation. He also made his opera debut last summer (2022) in HPAF's *Orpheus in The Underworld* as a member of the ensemble. He was also recently featured as a guest artist in a Kahilu Theatre concert called Operaloha with three other professional opera singers in January of this year (2023). Solomon was first invited to join the HPAF's Young Singers program as a scholar in 2018, and again in each of the subsequent years. He is currently studying at San Francisco Conservatory of Music, and has regularly undergone acting support through various offerings of Kahilu's Youth Troupe Program. With pride and appreciation, he is delighted to be a part of HPAF's Developing Singers group!



## **YUMEKO STERN** — **Witch, *Into the Woods***

Yumeko Stern is currently pursuing a BM in Vocal Performance with a concentration in musical theatre at NYU Steinhardt and studies with Justin John Moniz. She was most recently seen as Sheila Franklin in HPAF's 2022 production of *Hair* and in the Ensemble of *Nine* at NYU Steinhardt. Yumeko has been performing in Connecticut community theater productions for the past decade. Her favorite roles she has played are Lola Stover from *Parade* (Opera House Players), Lucy from *You're a Good Man Charlie Brown* (Cirillo Summer Theatre), and James Trotter from *James and the Giant Peach* (Standing Room Only). Some of her most recent accomplishments include becoming a top 10 Finalist in the American Pops Orchestra's NextGen Competition, placing 1st in the Second-Year College Musical Theatre Treble division, and placing 2nd in the Second-Year Classical Treble division at the NATS Eastern Region Student Auditions. Love and gratitude to the faculty, cast, and crew of HPAF.



## **ABBY STEWART** — **Little Red Riding Hood, *Into the Woods***

Abby Stewart (she/her) is a rising junior in the NYU Steinhardt Vocal Performance Musical Theater program. Recently, she has been seen in the *Unplugged* ensemble, directed by Jamon Maple at NYU, and *Ghost Light: Illuminating the Darker Side of Broadway* at The Green Room 42. Abby regularly performs with the sketch comedy group Comic Sans at NYU. She is a singer-songwriter and performs around lower Manhattan under the name Punkrock Johnson. Abby is from Wisconsin. @punkrockjohnson

# DEVELOPING SINGERS



## **CHLOE SUNDET** — Rapunzel, *Into the Woods*

Chloe Sundet is a budding coloratura soprano from East Wenatchee, Washington. She has performed in concerts, musicals, and operas with companies such as Pacific Opera Project, Opera Neo, Wenatchee Valley Symphony, Leavenworth Summer Theater, her alma mater, Whitworth University, and the University of Southern California. Some of her favorite roles include: Morgana from *Alcina*, Mabel from *Pirates of Penzance*, Daphné from *Actéon*, Liesl from *The Sound of Music*, Jo from *Little Women*, Fairy Queen from *St. George and the Dragon* and Wednesday from *The Addams Family*. She has also sung as Soprano Soloist in Mozart's Great Mass in C with Columbia Chorale, Soprano Soloist in excerpts of Handel's Messiah with Whitworth University, and Soprano Soloist in Saint-Saëns Christmas oratorio. She is excited to join the Hawaii Performing Arts Festival as the role of Rapunzel in Sondheim's *Into the Woods*. As an accomplished pianist, Chloe enjoys playing an eclectic mix of classical, contemporary and musical theater repertoire and has competed at the state level, winning several categories. Currently, she is studying under the tutelage of Elizabeth Hynes and Lynn Holding at the University of Southern California, earning her Masters of Music degree in Vocal Arts.



## **NATALIE VATCHER** — Queen of the Night, *The Magic Flute*

Natalie Vatcher, a Boston-based coloratura soprano, is thrilled to be making her role debut as Die Königin der Nacht in HPAF's production of Mozart's *Die Zauberflöte!* This past January, Natalie made her professional debut with Boston Opera Collaborative premiering two roles in their annual production of commissioned short operas, Opera Bites. This Spring, she returned to the stage with Boston Opera Collaborative in the chorus of Donizetti's *L'Elisir d'Amore*, directed by Alyssa Weathersby. Natalie made another company debut this May with MassOpera. She performed the role of Papagena and covered the role of The Queen of the Night in MassOpera's production of *The Magic Flute*. Natalie holds degrees from the Eastman School of Music (BM'18) and the Longy School of Music of Bard College (MM'21), where she was the Patricia Ostrander Scholar. Favorite roles include Morgana in Handel's *Alcina*, Flora in Britten's *The Turn of the Screw*, Clara Johnson in Adam Guettel's *The Light in the Piazza*, Jenny Slade in Robert Ward's *Roman Fever*, and the title role in Pauline Viardot's *Cendrillon*. Natalie is also a substitute for the esteemed Boston Baroque Chorus under the baton of Martin Pearlman.

# DEVELOPING SINGERS



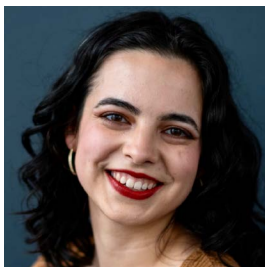
## **RAJI VENKAT** — Papagena, Pamina (cover), *The Magic Flute*

Raji Venkat is an Indian-American soprano from the greater-Atlanta area. Recently, she sang as Sophie in the renowned Opera *Werther* at William Jewell College and performed the main role of Addie, in *The House without a Christmas Tree*. Ms. Venkat is also a graduate of New England Conservatory, where she studied her M.M. in vocal performance with Carole Haber. Her stage performance includes opera, concert works, Indian classical dance, and Carnatic music. Past roles include Constance from *Dialogues of the Carmelites*, Pamina in *The Magic Flute* and Barbarina in *The Marriage of Figaro*. Raji has recently appeared on Kansas Public Radio station, won multiple international competitions, and has received a Lucie C. Ruzieka award.



## **JOSH VREELAND** — Cinderella's Prince, Wolf, Baker (understudy), *Into the Woods*

Joshua Vreeland is currently pursuing a Master's degree in music theatre voice performance along with an advanced certificate in voice pedagogy from NYU's Steinhardt School. Aside from his studies he also serves as an adjunct instructor of voice, teaching voice lessons to non-major students. Recent roles include Ensemble in NYU Steinhardt's *Dido and Aeneas* and Woof in Hawaii Performing Arts Festival's *Hair*. He is very excited to be returning to the Big Island!



## **EMMA WILANSKY** — Second Lady, *The Magic Flute*

Emma Wilansky (Second Lady) is a senior voice performance major at Baldwin Wallace Conservatory of Music studying with Professor Nancy Maultsby. Her previous roles include Mabel in Gilbert and Sullivan's *Pirates of Penzance*, Fortuna in Monteverdi's *L'incoronazione di Poppea*, Oberto in Handel's *Alicia*, Pilot in Portman's *The Little Prince*, Zelda in the virtual micro opera *Virtually Dead* by Kamala Sankaram and Jerre Dye, and Kitchen Maid in the world premiere production of *La casa de Bernarda Alba* by Caridad Svich and Griffin Candey. She also sings with the Baldwin Wallace motet choir and is a member of Mu Phi.



## **DANIELLE YAMASHIRO** — First Spirit, First Lady (cover), *The Magic Flute*

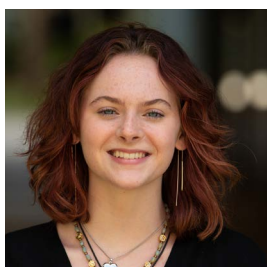
Danielle Yamashiro was born and raised in Kailua, Hawaii. After discovering a love of singing in Elementary at Punahou school, she participated in the Hawaii Opera Theatre Orvis Young Voices studio, and Hawaii Youth Opera Chorus ensemble. Her first Opera was *Madame Butterfly* with HOT in 2022. In December, Danielle was a singer at the annual Queen Kapiolani evening tours at Iolani Palace and she recently sang in Ithaca College's production of *The Pirates of Penzance*. Her first Magic Flute experience was with Hawaii Opera Theatre's OPERAtunities youth summer program "Kahea: The Magic Flute Hawaiian Style!" at UH Manoa. She is currently enrolled in Ithaca College, pursuing a bachelor's degree in Vocal Performance.

# YOUNG SINGERS



## **RILEY BERGIN** — Featured Artist, Young Singer Showcase

Riley is a student at Parker School in Waimea and will be entering the 8th grade in August. She has been involved in Kahilu theatre through the aerial silks program as well as dance programs. Her school curriculum has allowed her participation in the Parker theatre program, both in a back stage capacity and singing/acting. She began her on-stage career with the Sound of Music as Brigitta. Her most recent production was in the Disney production of Newsies at Parker where she also studied under Ms. Duggan for Jazz dance training as well as a speaking roll of a Bowery Girl and Brooklyn Newsie. She is a focused and engaged participant in academics as well as her passion of English Riding. She is consistently on deans list at Parker and has collected quite a few ribbons from jumping horses! She enjoys traveling, time with family, and trying new food when she has the opportunity.



## **ARIA BONSKI EVANS** — Featured Artist, Young Singer Showcase

Aria Bonski Evans is a native of Santa Barbara, CA, where she is a sophomore in high school. She has been singing all her life, and loves finding freedom and expression in her voice. The daughter of a professional musician, Aria has always been around music, touring with her Mom's tango quartet and attending opera rehearsals with her before she could walk. At age four, Aria was recruited to play Dolore in Opera Santa Barbara's 2012 mainstage production of *Madame Butterfly*. She studied piano and clarinet throughout elementary school, with Natasha Kislenko at UC Santa Barbara, and Dr. Joanne Kim at Westmont College. Aria soared through all five years of the honors chorus program with the American Riviera Children's Chorus, and in 2019, received a scholarship to attend the ACDA National Youth Honor Chorus in Salt Lake City, UT, where she got to perform in the Tabernacle. Last month, Aria was awarded the Nathan Rundlett Memorial Vocal Scholarship from the Santa Barbara Music Club, and was invited to perform in the showcase recital. Aria currently studies with Agatha Carubia, who has been an inspiration. In her free time, Aria enjoys studying fashion, hanging out with her friends, and babysitting.



## **SARENA COOK** — Featured Artist, Young Singer Showcase

Sarena Cook is currently a freshman at Parker School. She was most recently seen in Newsies as Specs for her school's musical production. She also takes part in Ballet, Jazz and various acting classes. She started her first musical in 2016, with *The Little Mermaid* and has continued to participate in the arts for the last seven years. She is very excited to participate in HPAF this year for the first time.

# YOUNG SINGERS



## **JESS GRAVES** — Featured Artist, Young Singer Showcase

Jess Graves found her place on the stage at age 5, where she played the role of a fairy in *A Midsummer Night's Dream*. Since that time, Jess has starred as Thor the Thunder God in *The Treasures of the Gods*, Sita in *The Ramayana*, and has appeared in countless stage and film performances with Prince Dance Institute and Keystone Waldorf School where she has shared her love of song, music and movement with the Hawaii Island community.



## **KALEAH TAYLOR** — Featured Artist, Young Singer Showcase

Kaleah Taylor is a sophomore at Archbishop Mitty High School. Kaleah had her stage debut when she was eight years old in *A Christmas Carol* at Children's Musical Theater San Jose. Most recent roles and productions include The Baker's Wife in *Into the Woods* (Young Actors Theatre Camp), Patrice in *13 (Starting Arts Dream Team Two)*, Ms. Hannigan in *Annie* (Starting Arts Dream Team Two), ensemble in *The Wedding Singer* (Bellarmine College Preparatory), Yvette in *Clue* (Bellarmine College Preparatory), and Logainne's understudy in *The 25th Annual Putnam County Spelling Bee* (Archbishop Mitty High School). She recently got the opportunity to work with Susan and Kelton Jones in the short film (*ID*)*IOTS* (Produced by Camp YATC) which premiered this year in the Emerging Filmmakers Showcase at the American Pavilion at the Cannes Film Festival. Kaleah currently takes tap, and jazz classes at Starting Arts and studies voice with Jennifer Schapiro.



## **THALEN WILEY** — Featured Artist, Young Singer Showcase

Thalen Wiley is a 17 year old singer, dancer, and actor. He was born in Michigan and moved to Hawaii in 2015. He found singing and acting after he moved, which helped him with his transition and gave him the confidence he needed to stabilize his new life on the island. In this year's HPAF, he is participating to advance his singing skills, meet more people that share the same passions as him, and further his knowledge into the performing arts. The performing arts is something Thalen has come to love because it has given him the possibilities to explore himself and be a part of an amazing and talented community. Now this year's HPFA can give him that extraordinary opportunity to make that happen.

## **HPAF GRATEFULLY ACKNOWLEDGES THE SUPPORT OF**



**FORC**, specializing in farm to table, steaks, fresh fish, etc. We support local farmers, local dairies, goat cheese producers, etc.



**Michaela Lehuanani Larson** — Hawaii Untouched, LLC & Hawaiian Style Beach Weddings [www.hawaiiuntouched.com](http://www.hawaiiuntouched.com)



**GIVE TO  
THE ARTS.**



**design  
pro** LLC

**CREATIVE DIRECTION  
GRAPHIC DESIGN  
COPYWRITING**

## **PERFORMING VISUAL LITERARY**

Now, more than ever, inventive minds need the physical and mental space to evoke insight through creative expression. Mahalo to all who help maintain this vital space and bring light to the world. A gift to the arts is a gift to us all.

good-for-the-world creative consulting,  
graphic design & branding

**c.bay**  
DESIGN

[chelseabaydesign.com](http://chelseabaydesign.com)



# KAHILU

Heart of the Arts in Hawai'i





STAY IN TUNE.





## MORE THAN EVER.

Hawai'i Public Radio keeps you in tune with local, national, and international news, and music from around the world.

**HPR-2** is  
your home for classical music

 [hawaiipublicradio](https://www.facebook.com/hawaiipublicradio)  [@WeAreHPR](https://twitter.com/WeAreHPR)  [@WeAreHPR](https://www.instagram.com/WeAreHPR)  
[hawaiipublicradio.org](https://www.hawaiipublicradio.org) / mobile app "hpr"

On Hawai'i island:

 **1** KANO 89.1, KHPH 88.7, KKUA 90.7, K235CN 94.9  
 **2** KIPH 88.3, KIPM 89.7, KAHU 91.3, K239BV 95.7, K283CR 104.5